

Kepler  
Superb Astrology Software

The World's First Astrology Software that provides Comprehensive Research and Electional Astrology, Complete Western and Vedic Astrology, and the Most Advanced AstroMaps all in One Program!

★ Beautiful and Easy To Use!

COSMIC PATTERNS CATALOGUE

[www.AstroSoftware.com](http://www.AstroSoftware.com)



# COSMIC PATTERNS



*Dear Friends,*

*Thank you for your interest in our software.*

*The Cosmic Patterns Software team is dedicated to developing the highest quality and standard in astrology software. Requests and suggestions from our customers drive our software development. Therefore, you, our clients and customers, are also part of the team. Without your support and participation, the work would not be possible.*

*We also insure that the software is beautiful and easy to use. Very often software becomes more difficult to use as it becomes more powerful. However, this is not the case with our software. Each new version is more powerful and flexible, and yet easy to use.*

*Astrology has evolved over thousands of years in many cultures and there are a seemingly endless number of techniques, theories, applications, and features that can be added to Kepler. If you have any technique in mind that is not in the Kepler program, let me know.*

*We take special pride in providing excellent customer support, and we work very hard to create not only a beautiful, easy to use, thoroughly debugged program at a reasonable price, but to support every customer as well. Most customers prefer to use email to contact us. Our email address is [kepler@AstroSoftware.com](mailto:kepler@AstroSoftware.com) and our web site is [www.AstroSoftware.com](http://www.AstroSoftware.com). We answer email within 1 business day. You can call us during business hours (9 AM to 5 PM Eastern Time, Monday through Friday) at 352-373-1504. The 800 toll free number, 800-779-2559 is for orders only (not customer support). If you cannot call us during our office hours, let us know. Because many customers live in different time zones it may be difficult to call us during business hours. We can set an appointment for you to call us after office hours on weekdays only.*

*Hopefully this letter gives you a better appreciation of the nature of our business, and that we are very dedicated to astrology and providing a very professional, excellent service to you. If you have any questions about our products and services, or you have any suggestions, feel free to contact me directly.*

*Best Wishes,*

*FEI COCHRANE,*

*President  
Cosmic Patterns Software, Inc.*



## KEPLER INTRODUCTION

Kepler requires a computer with a CD rom drive, Windows 95/98/2000/ME/XP, 32 MB RAM memory or more, and about 500 MB disk space. Kepler also includes an additional 450 megabytes of graphics and sound files which can be left on the CD, or optionally may be installed on the hard drive. Speakers are not required but are recommended. Kepler also runs on PowerMac computers with Virtual PC software installed.

**Kepler is a revolutionary product unlike anything else:** so complete and easy to use that a complete novice can obtain useful information, but so sophisticated that it uses cutting edge astrological theory (harmonics and cosmobiology, for example) to produce some of the interpretive reports - don't worry, you don't need to understand what these are to use Kepler! Kepler is a complete astrological software system that provides a huge number of technical calculations, interpretations, astrological education, a Multimedia presentation, graphics, etc.

**Accuracy and Time Range of Calculations:** Planets can be calculated from the years 999 BC to 2300 AD, except the asteroids and 8 transneptunian planets, which in some cases cannot be calculated before 1000 AD. Accuracy of all planets is less than 1 second of arc, and the accuracy for the asteroids, transneptunian planets, and Chiron is 1 minute of arc.



## Calculations in Alphabetical Order

### Angular Distanc

**Ancient Western:** Essential Dignities and Planetary Hours

**Ancient Western:** Firdaria

**Antiscia and Contra Antiscia Charts and Listings**

**Arabic Parts Listing**

**Arabic Parts Wheels**

**Arc Transform Chart**

**Art Wheels:** Chart Wheels that look like works of art

**Art Gallery:** Hundreds of Astrological Graphics

**Ascendant:** Rotate the chart to put any planet or midpoint on the ascendant

**Aspects and/or Midpoints Between Charts**

**Aspect Listings with Moon Details (VOC included)**

**Asteroids:** Adding asteroids to chart wheel

4 Major Asteroids and Chiron can be put in Wheel.

1000 other asteroid positions are in a list.

An option to buy optional asteroids CD for Kepler

**Asteroid Ephemeris**

**Asteroid Wheels**

**AstrologyClock**

**AstroMaps:**

**Geodetic Maps:**

Geodetic Planet Map

Geodetic Reference Map

**Horizon Maps:** A horizon map is a slight variation of a local space map; the horizon map plots the actual house cusps whereas in a local space map house Asc lines are drawn due east-west and the MC lines are drawn due north-south. The planet lines in a horizon map and local space map are identical.

**Local Space Maps, Local Space Map's with Asteroids**

**Zodiac Sign Maps:** AstroMaps that show where the zodiac sign of the Ascendant and MC change.

**Regular Maps without Orbs**

**Regular Maps with Orbs**

**Regular Maps** calculated in longitude or in mundo

Flexible and easy to use

Zoom in and zoom out feature

Select any city and put it in the middle of the map

Options to include:

4 Major Asteroids

Chiron

Major Aspects

Minor Aspects

Midpoints

**Treasure Maps (a Unique and Exciting Feature):**

Love and Romance Map

Vocation and Career Map

Friendship and Family Map

Imagination and Inspiration Map

Excitement and Instability Map

Point and Click Interpretations

Explanatory Guide to Treasure Maps

Paran Listings

Education and Communication

Culture and Creativity

Optimism and Opportunity

Responsibility and Focus

**AstroSignature Forecast**

**Atlas:** Complete atlas, time zones, and daylight savings time information, updated each new version of Kepler with recent changes in laws.

**Ayanamsha:** 22 different ones to choose from, or enter your own customized ayanamsha

Fagan/Bradley

Lahiri

De Luce

Raman

Ushashashi

Krishnamurti

Djwhal Khool

Yuktेशwar

JN Bhasin

Babylonian, Kugler 1

Babylonian, Kugler 2

Babylonian, Kugler 3

Babylonian, Huber

Babylonian, Mercier

Aldebaran at 15 Taurus

Hipparchos

Sassanian

Galactic Center on Sagittarius

J2000

J1900

B1950

Customized value

**Azimuth-Altitude**

**Chart Wheels** (see "Wheels" below)

**Chart Explorer** (Vedic interactive interpretations courtesy of Australian astrologer Dadhichi Toth)

**Comparison Charts**

**Composite Charts**

**Coordinate System:**

Normal (Zodiac Longitude)

Heliocentric

Horizon (azimuth-altitude, east on left side)

Azimuth (West on left side)

Right Ascension

Mundoscope (prime vertical chart)

Declination Longitude Equivalent

Declination Longitude Equivalent Antiscia

Declination Longitude Equivalent Contra-Antiscia

Norma (not adjusted)

Draconic (mean node)

Draconic (true node)

Tobey Secondary

Antiscia Chart

Contra Antiscia Chart

Dwadasamsa

Sun Zodiac Chart (Sun=0 Aries)

Moon Zodiac Chart (moon = 0 Aries)

Mercury Zodiac Chart (Mercury = 0 Aries)

Venus Zodiac Chart (Venus = 0 Aries)

Mars Zodiac Chart (Mars = 0 Aries)

Jupiter Zodiac Chart (Jupiter = 0 Aries)

Saturn Zodiac Chart (Saturn = 0 Aries)

Uranus Zodiac Chart (Uranus = 0 Aries)

Neptune Zodiac Chart (Neptune = 0 Aries)

Pluto Zodiac Chart (Pluto = 0 Aries)

Asc. Zodiac Chart (Asc. = 0 Aries)

House Zodiac Chart

**CoAscendant in chart wheel**

**Composite:**

Asc Midpoint

MC Midpoint

Derived Asc

Davidson Time-Space

**Day-for-a-year Ingresses Rx/Direct**

**Declination Longitude Equivalent Chart**

**Declination Longitude Equivalent Chart Antiscia Chart**

**Declination Longitude Equivalent Chart Contra Antiscia Chart**

**Degree Meanings**

**Draconic Chart**

**Declinations:** Transit to natal declinations, and progressed to natal declinations, and a list of declination positions in the chart wheel, as well as the parallels of declination. You can also obtain midpoint structures in declination and a graphic ephemeris in declination.

**Dwadasamsa Chart**

**Eclipses indicated in transit-to-natal printouts**

**Eclipse Maps:** Date and Time, as well as eclipse path is displayed Ability to display more than one eclipse path on a map.

**Eclipse, Lunation, and Ingress Charts**

**Educational and Learning: Avalon Lessons**

**Electional Astrology Graph**

**E-mail printouts directly from Kepler**

**Encyclopedia**

**Ephemeris Tables of Planets and/or Asteroids**

**Essential Dignities and Planetary Hours Table**

**Financial Astrology:**

Graph financial data e.g. stock or commodity

Import financial data from other company that provides financial data

Automatically pick out and save on a file high and low days

Files are saved in Kepler data base

Produce gold price forecast and silver price forecast

Use Kepler's research tools to create forecast for other commodities

Designed specifically for index and commodity forecasts (stock forecasts not available yet)

**Fixed Stars**

**Fixed Star Wheels**

**Gauquelin Sector**

**Grand Trines, T-Square, Yods, etc. Listings: 3-Planet**

Patterns formed by any combination of the following aspects: ♌, ♍, ♎, ♏, ♐, ♑, ♒, ♓

**Graphic Ephemeris:**

Natal, transiting, secondary progressed, and/or solar arc positions can be combined together

Color coded lines help identify which charts are involved in an aspect

Customize by selecting planets, line thickness and other printouts

Use Longitude, Declination, and Latitude positions

**Harmonic Charts listings of harmonic aspects and harmonic patterns**

**Harmonic Highlights Report by David Cochrane**

**Health Encyclopedia**

**Heliocentric wheel**

**Horizon Chart**

**House System Comparison**

**Huber House Wheel**

**Huber Style Wheel**

**Huber Mondknoten**

**Ingresses**

**Ingresses:** Day-for-a-Year Ingresses and Rx/Direct

**Ingresses into Zodiac Sign**

**Kepler Workshop** (Vedic, etc.)

Vedic: Chakras and Vargas, Gochara (Transits), Dasas and Bhuktis Ashtakavarga

Sky Map, Eclipse Map

Graphic Ephemeris, Text Ephemeris

Moon Calendar

Star Catalog

Kepler WorkShop Astrology Clock

Chart Explorer

Declination (equatorial)

Latitude (ecliptic)

**Lilith (mean black moon) in chart wheel**

**Lilith (true black moon) in chart wheel**

**Lunar Return**

**Lunar Eclipse Listing**

**Lunar Phase Report**

**Lunation and/or Eclipses** (any location)

New Moon (Including Solar Eclipses)

Solar Eclipse

Full Moon (Including Lunar Eclipse)  
Lunar Eclipse  
Solar and Lunar Eclipses  
All of the above

Medieval Wheels

Midpoint Trees, and Midpoint Sorts, Midpoint trees  
between 2 charts

Moon's Node:

Mean  
True

### Moon Calendar

Day	Longitude	Age	Dist. km	Phase
01 Tue	62° 28' 57"	4.85	44,531	000,000
02 Wed	61° 58' 12"	7.76	64,346	330,277
03 Thu	57° 38' 45"	9.72	64,222	330,123
04 Fri	49° 10' 42"	9.72	73,822	304,274
05 Sat	34° 41' 05"	10.74	62,688	319,296
06 Sun	00° 2' 57"	11.79	36,223	312,370
07 Mon	22° 2' 14"	12.08	26,522	347,181
08 Tue	68° 48' 58"	14.02	38,242	363,179
09 Wed	21° 44' 45"	15.15	39,771	368,564
10 Thu	36° 46' 16"	16.38	37,544	379,740
11 Fri	21° 44' 17"	17.45	32,028	369,826
12 Sat	36° 10' 32"	18.09	34,671	363,697
13 Sun	21° 47' 05"	18.76	74,544	304,890
14 Mon	02° 11' 18"	19.79	64,346	371,997
15 Tue	19° 21' 11"	20.08	53,238	375,976
16 Wed	34° 2' 44"	20.08	42,131	380,899
17 Thu	19° 2' 29"	21.05	32,028	385,826
18 Fri	20° 2' 54"	24.07	22,922	390,625
19 Sat	11° 2' 36"	25.01	14,816	394,543
20 Sun	24° 54' 28"	26.76	8,911	397,598
21 Mon	36° 8' 21"	27.71	6,805	403,261
22 Tue	19° 8' 27"	28.62	1,011	402,620
23 Wed	03° 01' 26"	29.52	6,094	404,448
24 Thu	12° 01' 10"	30.01	0,591	405,673
25 Fri	24° 01' 08"	31.76	5,916	408,206
26 Sat	15° 2' 52"	33.68	7,186	408,244
27 Sun	11° 48' 33"	33.68	13,631	404,919
28 Mon	23° 0' 32"	34.45	20,288	402,595
29 Tue	11° 29' 31"	35.25	29,939	399,919
30 Wed	23° 38' 47"	36.38	38,471	395,343
31 Thu	62° 54' 16"	37.22	48,644	391,019

Polar Ascendant in chart wheel

Paran Listings

Planetary Pitches (Music of the Spheres)

Planet Ephemeris

Planet Return

Precessed Solar, Lunar, and Planetary Returns

Primary Directions: List of dates when primary  
directed planets cross angular cusps

Primary Arcs Table

Profile Category Scores

Progressions:

Progressed Chart & Listings

Degree-for-a-Year

Secondary

Solar arc directions

Month-for-a-year

Direct or Converse

Progress-to-Natal aspects

Progressed-to-Progressed aspects

Progressed and transiting midpoint structures

Progressed Time Line Profile

Methods for progressed houses:

Solar Arc MC with corresponding Asc at the  
geographic latitude

Naibod Arc in Right Ascension

Mean Solar Motion

Time of the progressed chart

Progressed-to-Progressed

Progressed-to-Progressed Lunar Phase Listing

Rectification Assistance: You can enter the date when  
a person got married, was in an accident, or experi-  
enced other major events, and obtain a total score  
based on how many transiting and progressed aspects  
occurred that match the events. Then you can adjust  
the birth time and compare scores. You can, of course,  
change the astrological weighting for each transiting  
or progressed aspect. For the astrologer who is

serious about chart rectification, this feature is a big  
help

Relocated aspects to Asc and MC

Relocated Charts

Research:

Aspects

Aspects between 2 charts

Astrological signatures. Discover them, create them,  
and test them!

"Assumption-less research":

Kepler finds most frequent astrological factors for  
you.

Complex and sophisticated astrological signatures.

Compare frequency that occurs in the chart being  
studied to the frequency that occurs during any time  
period when researching Aspects, Midpoints, or  
Harmonics

Determine most common factors

Pairs Relationship

Match Making

Forecast Research of 1 day

Harmonic patterns

Midpoints

Multiple factors

Other astrological factors: planetary speed, elements,  
fixed stars, etc.

Planets in houses

Planets in signs

Research specific astrological factor for an individual

Right Ascension:

Positions listed in wheel printouts, or

Produce a wheel with right ascension positions

Sabian Symbols

Set a default place to use in AstroMap

Sky Map

Solar Return

Star Catalog

Synastry:

Midpoints Comparison

Aspect Grid Compare (also available in BiWheel)

Harmonic Aspect Grid Compare

Compatibility Scores

Compatibility Text Listing

Tobey Secondary

Time Line Profile: forecast accident

proneness, athletic performance,

etc. with a customizable, sophis-

ticated weighting scheme

Time Line Forecast: easy to

read graphic presentation

Transneptunians

TransPluto in Chart Wheels

Transits or Forecast:

Transit-to-Natal

Transit-to-Transit

Transit-to-Progressed

Transiting planet-to-

natal-midpoint

Transiting midpoint-to-

natal-planet

Transit-to-Transit Stations,

Zodiac Sign Ingresses



**Vedic Astrology:**

Chart Wheels in either North Indian or South Indian style

Dasas: Ashtotari, Narayana, and Vimsotari

Bhuktis ☐ ShadBala ☐ Nakshatras

Vargas ☐ Gochara ☐ Ashtakavarga

Shad Bala ☐ Sthanna Bala ☐ Mangalik

Kepler provides you with all of the fundamental features of Vedic astrology.

**Vedic Insight Report**

**Vertex**

**Void of Course Moon Listing**

**Wheels:**

Chart Wheels

Harmonic Chart

Arabic Parts Wheel

Fixed Stars Wheel

Huber Wheel

Square Wheel

TriWheel Animation

Transit Wheel

Natal Chart Wheel

2 Separate Wheels

3 Separate Wheels

4 Separate Wheels

TriWheel Animation

Medieval Wheel

Blank Wheel

BiWheel

TriWheel

QuadWheel

Asteroids Wheel

Heliocentric Wheel

Midpoints Wheel

Japanese Wheel

**Whole Sign Houses** (zero degrees of rising sign is Ascendant, zero degrees of next sign on 2nd cusp, etc. with Asc and MC placed in the wheel like planets)

**90 Degree Dial:**

Regular BiWheel TriWheel QuadWheel

Clearly marked and accurate placement in dial ruler.

## OTHER FORECAST FEATURES

### Day-for-a-Year

Day-For-A-Year Progressed Sign Regression and Rx Direct Dates 0 to 30 Years Old David Colman

SAT DIRECT	May 4, 1949
Sun returns	Dec 28, 1950
Moon returns	Jul 8, 1951
Mars returns	Apr 22, 1952
JUP returns	Jan 22, 1954
Venus returns	Oct 12, 1954
Sat returns	Jul 8, 1957
Sun returns	Dec 28, 1958
Moon returns	Jul 8, 1959
Mars returns	Apr 22, 1960
JUP returns	Jan 22, 1962
Venus returns	Oct 12, 1962
Sat returns	Jul 8, 1965
Sun returns	Dec 28, 1966
Moon returns	Jul 8, 1967
Mars returns	Apr 22, 1968
JUP returns	Jan 22, 1970
Venus returns	Oct 12, 1970
Sat returns	Jul 8, 1973
Sun returns	Dec 28, 1974
Moon returns	Jul 8, 1975
Mars returns	Apr 22, 1976

David Colman: May 1, 1949 6:29 AM  
 Place: London, New York 40 42 00 W 74 00 00 W  
 Longitude 40.700000  
 Twilight: Sunrise Time observed 06:59:24.00 Time Zone 8  
 Time Zone

Suppose that you are an astrologer and you would like for your clients the following information for the coming year: outer planet transits to the natal chart, secondary progressed to natal, secondary progressed to progressed, and solar arc to natal aspects. Kepler has been able to provide you this information even 10 years ago, but now it is much faster to obtain and easier to read. In Kepler, you no longer have to individually select these printouts. A screen is displayed that allows you to check which forecasts you want, and you can save this set of selections as a default for the future. The forecasts are displayed in time line format. The simple text listing format is still available, but only the time line format is available in this more elegant method of selecting forecasts.

### Other Forecast Lists:

- A listing of dates when the secondary progressed planets enter a new zodiac sign or turn Rx or direct can be produced.
- A listing of dates when transiting planets enter zodiac signs and a list of void of course moon times can also be produced.
- Specify which aspects to use to determine the time that the Moon is void of course.
- Produce a list of dates and times when planets turn Rx or direct.

### Time Line Profile

Admitt. Performance	Jan 22	Apr 22	Jul 8	Oct 12	Jan 22	Apr 22	Jul 8	Oct 12	Jan 22	Apr 22	Jul 8	Oct 12
Business Success	Jan 22	Apr 22	Jul 8	Oct 12	Jan 22	Apr 22	Jul 8	Oct 12	Jan 22	Apr 22	Jul 8	Oct 12
Dom. affairs, mar.	Jan 22	Apr 22	Jul 8	Oct 12	Jan 22	Apr 22	Jul 8	Oct 12	Jan 22	Apr 22	Jul 8	Oct 12
Food Luck, Customs	Jan 22	Apr 22	Jul 8	Oct 12	Jan 22	Apr 22	Jul 8	Oct 12	Jan 22	Apr 22	Jul 8	Oct 12
Mindful Action	Jan 22	Apr 22	Jul 8	Oct 12	Jan 22	Apr 22	Jul 8	Oct 12	Jan 22	Apr 22	Jul 8	Oct 12
Magical, occultism	Jan 22	Apr 22	Jul 8	Oct 12	Jan 22	Apr 22	Jul 8	Oct 12	Jan 22	Apr 22	Jul 8	Oct 12
Traveling, Sojourn	Jan 22	Apr 22	Jul 8	Oct 12	Jan 22	Apr 22	Jul 8	Oct 12	Jan 22	Apr 22	Jul 8	Oct 12
Health, Diseases	Jan 22	Apr 22	Jul 8	Oct 12	Jan 22	Apr 22	Jul 8	Oct 12	Jan 22	Apr 22	Jul 8	Oct 12
Law, Justice, Courts	Jan 22	Apr 22	Jul 8	Oct 12	Jan 22	Apr 22	Jul 8	Oct 12	Jan 22	Apr 22	Jul 8	Oct 12
Physical activities	Jan 22	Apr 22	Jul 8	Oct 12	Jan 22	Apr 22	Jul 8	Oct 12	Jan 22	Apr 22	Jul 8	Oct 12
Knowledge, Faculty	Jan 22	Apr 22	Jul 8	Oct 12	Jan 22	Apr 22	Jul 8	Oct 12	Jan 22	Apr 22	Jul 8	Oct 12
Religion, sciences	Jan 22	Apr 22	Jul 8	Oct 12	Jan 22	Apr 22	Jul 8	Oct 12	Jan 22	Apr 22	Jul 8	Oct 12
Artistic, hobbies	Jan 22	Apr 22	Jul 8	Oct 12	Jan 22	Apr 22	Jul 8	Oct 12	Jan 22	Apr 22	Jul 8	Oct 12
Academic Progress	Jan 22	Apr 22	Jul 8	Oct 12	Jan 22	Apr 22	Jul 8	Oct 12	Jan 22	Apr 22	Jul 8	Oct 12

### Time Line Format:

Calendar date is printed periodically so that while looking through the printout, you can see what the dates are without needing to scroll up and down repeatedly.

### Time Line Format

General Transit	Jan 22	Apr 22	Jul 8	Oct 12	Jan 22	Apr 22	Jul 8	Oct 12	Jan 22	Apr 22	Jul 8	Oct 12
Secondary Progressed to Natal	Jan 22	Apr 22	Jul 8	Oct 12	Jan 22	Apr 22	Jul 8	Oct 12	Jan 22	Apr 22	Jul 8	Oct 12
Solar Arc	Jan 22	Apr 22	Jul 8	Oct 12	Jan 22	Apr 22	Jul 8	Oct 12	Jan 22	Apr 22	Jul 8	Oct 12
Secondary Progressed to Progressed	Jan 22	Apr 22	Jul 8	Oct 12	Jan 22	Apr 22	Jul 8	Oct 12	Jan 22	Apr 22	Jul 8	Oct 12
Secondary Progressed to Aspects	Jan 22	Apr 22	Jul 8	Oct 12	Jan 22	Apr 22	Jul 8	Oct 12	Jan 22	Apr 22	Jul 8	Oct 12
Secondary Progressed to Void	Jan 22	Apr 22	Jul 8	Oct 12	Jan 22	Apr 22	Jul 8	Oct 12	Jan 22	Apr 22	Jul 8	Oct 12

Also, the date when the aspect is exact now appears in the time line printout. Because the date was not given, some Kepler users continued to use text listings, but now this limitation has been removed.

The time line format is quickly becoming the preferred method of most Kepler users, and with these new features will undoubtedly continue to become more popular. The time line format has the advantages of allowing you to quickly and easily see what astrological influences are occurring, when they occur, and how strong they are at any time.

After making your selections, you can scroll through the list of transits and progressions without needing to jump between printouts.

We have also made the selection of forecasts easier by providing a menu that allows you to jump more quickly to the different kinds of forecasts available. In earlier versions, all of these methods appeared together in a large menu, and some users did not realize, for example, that they had the powerful Profile Time Line feature which gives scores for areas such as athletic performance, accident proneness, etc.

Now you won't miss these features hiding in a menu of selections that takes time to read.

**Other improvements on the Time Line Format:** Display along the bottom of each time line bar a thin red strip to indicate retrograde and/or a green strip to indicate direct motion of the transit or progressed planet. Also include the house position and/or zodiac sign or exact position of the transiting and natal planets along the left side, next to the aspect that occurs.

## ASTRO MAPS

Treasure Maps, local space maps, horizon maps, geodetic maps, and zodiac sign maps. Zodiac sign maps are AstroMaps that show where the zodiac sign of the Ascendant and MC change. A horizon map is a slight variation of a local space map; the horizon map plots the actual house cusps whereas in a local space map house Asc lines are drawn due east-west and the MC lines are drawn due north-south. The planet lines in a horizon map and local space map are identical. We also added the ability to print an AstroMap in larger sizes, with the information at the top and bottom in smaller type, and we added the ability to select the color of the water and land.

We also added a feature to selecting AstroMaps: if you select a geographic region with a town at the center, that town can be placed in the map; this is a minor improvement but is helpful when picking a very small town that otherwise may not appear in the map. No other program allows you to see the orbs of AstroMap lines and combine meaningful information so nicely as Kepler.

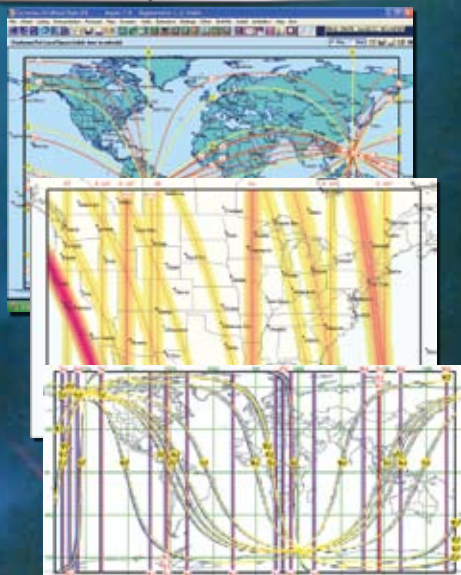
You can also set a default place when selecting an AstroMap by clicking on the "Default" button.

## Chart Wheels

*Dozens of chart wheel styles with hundreds of variations to choose from:*

- Regular Wheel
- BiWheel:  
Any 2 charts  
(natal, progressed, return, etc. of same person or different people)
- TriWheel:  
Any 3 charts  
(natal, progressed, return, etc. of same person or different people)
- QuadWheel:  
Any 4 charts  
(natal, progressed, return, etc. of same person or different people)
- 2, 3, or 4 wheels on one page or screen
- Huber Wheels
- Redesign and customize chart wheels
- Select from 50 color schemes or create your own.
- Different chart wheel styles
- Place graphic images in background, change fonts, etc.

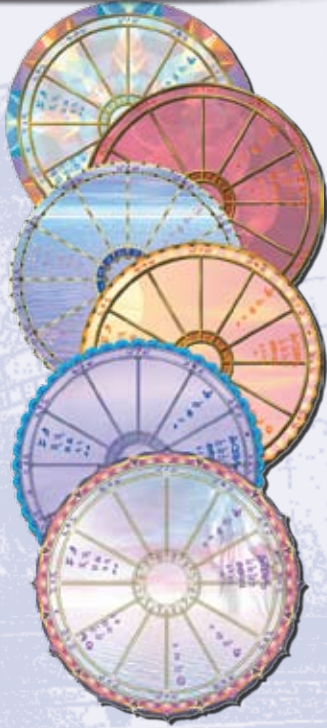
### Astro Maps



### Chart Wheels with Different Color Schemes



## Art Wheels



- Many other options like "out-to-in" placement of planets in wheel, etc.
- Print any chart wheel style in Portrait and Landscape format
- Save chart wheels to file in BMP, GIF, PNG, PCX, TIF, and JPG format.
- **Flexible Chart Wheels:** Wheel and other items in printout can be resize, moved given different colors, change fonts and size, etc.
- Ability to print the positions of the polar ascendant and co-ascendant in a table, ability to add a background color to tables or to the background of the page, and the ability to quickly select among sets of font sizes.

## ART WHEELS:

**Art wheels** are beautiful chart wheels. Our art wheels were designed by graphic artist Paul Guess. The planetary positions are placed within these exquisitely beautiful chart wheel images. These chart wheels are perfect for framing. They are best printed on a color printer. For an incredibly stunning chart wheel, print an art wheel on glossy paper with your color printer.

There are 30 art wheels to choose from, and there is a portrait (normal) and landscape (sideways) version of each art wheel. You also have a choice of purchasing additional 100 art wheels pastel collection.

In order to make the art wheels as beautiful as possible, the ability to add shadowing to the planetary information in the chart wheel has been added. This adds extra pizzazz to the art wheel.

## Art Wheels Portrait and Landscape Style



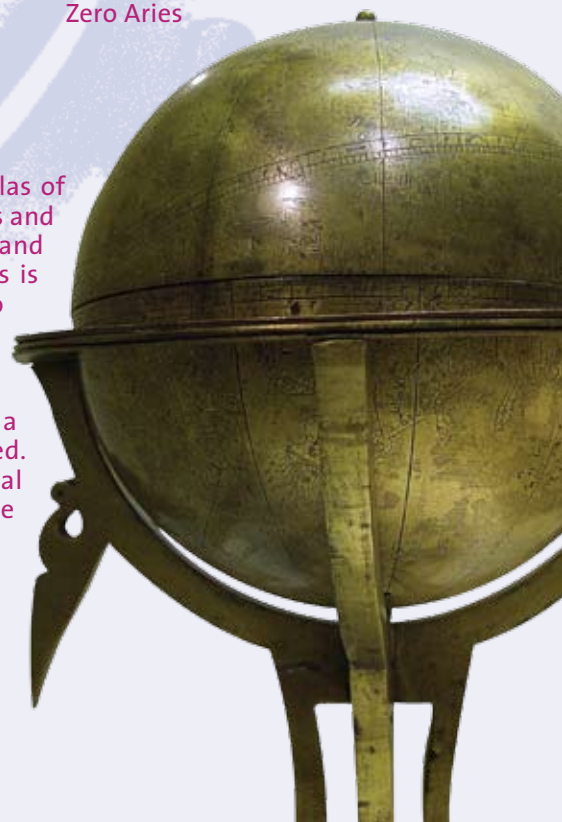
## HOUSE SYSTEMS

### 16 House Systems to choose from:

Campanus	Porphyry	Placidus
Neoporph	Equal	Regiomontanus
Planet on Asc.	Koch	Sun-on-Ascendant
Whole Sign	Meridian	Topocentric
Geodetic	Morinus	Zero Aries
Alcabitius		

## ATLAS

Kepler comes with a complete atlas of the world with over 260,000 cities and the most up-to-date time zone and daylight savings time tables. This is absolutely necessary in order to calculate a chart accurately!!! Easy-to-use: Type in upper or lower case, see cities as you type, and narrow the search to a specific country or state if desired. An option to purchase additional atlas is also available, that is the "MEGA ATLAS".





## Kepler Mega Atlas



**The Kepler Mega Atlas contains towns that are not in the Kepler atlas. The Mega Atlas does NOT replace the Kepler Atlas because it contains only towns that are not in the Kepler Atlas.**

The Mega Atlas provides over 1 1/2 million additional places. Many of these places are very small towns and villages, and some of them are alternative names of towns, such as when a town has a change of name. Birth places of historical figures are sometimes given as towns which many no longer exist or have had a change of name and in some cases this previously existing town or town with a different name will appear in the Mega Atlas.

If you enter the birth place into Kepler and the town is not found in Kepler's Atlas, you can click on the Mega Atlas button to see if it is in the Kepler Mega Atlas. The Kepler Atlas contains over 180,000 towns and nearly every town that a person is born in is already in Kepler but for those unusual cases when the town is not contained in Kepler, the Mega Atlas is very helpful.

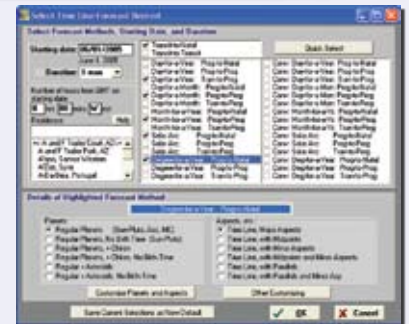
## FLEXIBILITY:

- Customize aspects and orbs, and have up to 12 pre-defined aspect sets. Edit any feature of an interpretive report, translate reports to a different language, or even create your own interpretive reports from scratch! You can customize regular wheels, BiWheel, TriWheel, QuadWheels, transit-to-natal aspects, progressed-to-natal aspects, Profile Reports and Time Line details. Select any True Type font for use in interpretations. The above list is a sample of some of the features that can be customized, and is not a complete list. It is easy to change the orb of aspects in natal and compatibility interpretation by selecting a report from a listing then edit it on the screen.
- It is also easy to customize a wheel. As you select the planets, aspects and orbs, colors, and what tables you want in the wheel, you immediately see the changes on the wheel that you are viewing.
- You can print chart wheels in heliocentric, horizon (azimuth-altitude east on left side, altitude-azimuth (west on left side), right ascension, mundoscope, declination longitude equivalent, declination longitude equivalent antiscia, and declination equivalent contra-antiscia.
- Planet Position in the wheel can either be in the traditional zodiac style or in 0-360 degree format which some astrologers prefer for horizon, heliocentric, and right ascension charts.
- You can also print midpoint trees and most other printouts using these coordinates systems.
  - It is easy to make a new chart wheel style the default. You can set a default Regular, BiWheel, TriWheel, and QuadWheel style.
- Use Pluto glyph: ♇ or ♂ Uranus glyph: ♅, or ♂ Lilith glyph: ♁, ♁<sub>n</sub>, ♂<sub>r</sub>, or ♂<sub>n</sub>
- The Vertex, Equatorial Ascendant, and 8 transneptunian planets can be put in the chart wheel.
- The Part of Fortune can be calculated using the ancient formula (Asc+Sun-Moon for night charts).

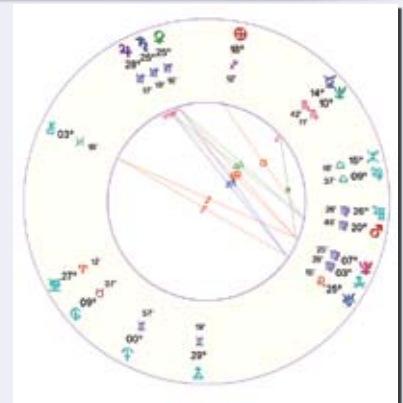
## Midpoint Selections



## Combine different transit calculations



## Heliocentric Wheel



### *Azimuth Altitude Wheel*



- It is possible to have arrows on angular cusps, different ways of placing planet positions in the chart wheels, and dozens of other ways that wheels and other printouts can be customized to suit your taste.
- Read chart data from WinStar, Solar Fire, and Astro Data Bank directly from Kepler's Data Entry screen.

**Create your own report, Duplicate or Clone a Report:** Creating your own report in Kepler is quite simple. You may also want to duplicate a report so that you can make a customized version of it, and also have the original report. Your customized version of the report may have relatively minor differences from the original report, or it may be a foundation for you to develop a completely new report. For whatever reason you want to duplicate a report, you can do this in Kepler.

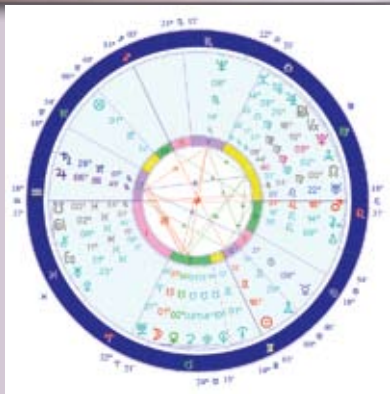
**Combine different transit calculations:** Kepler provides many formats for viewing transit and progressed listings, and the most popular one is time line format. You can quickly select different kinds of forecast methods (for example, transit-to-natal, progressed-to-natal, tertiary progressed-to-progressed, etc.) with different selections of planets and aspects for each one and see all of this information beautifully and clearly presented on your screen or printed out.

### *Simple and easy selecting and customizing a chart wheel*



**E-mail the chart wheels, interpretive reports, and other printouts directly from Kepler:** Enter the e-mail address of the person you want to e-mail the report to, and it will be e-mailed. Note that you must have an Internet Service Provider (ISP) for this function to work. Most of the free services and even a few that are not free (most notably AOL or MSN) will not work. Only services that provide an outgoing mail server name and user ID will work with Kepler's e-mail feature. DSL connection is compatible with Kepler e-mailing capability. Kepler will send your files to another program, such as Paint, or Notepad and you can e-mail from there.

### *Customised chart wheel with all possible planets selected*



The ability to e-mail any printout directly from Kepler requires an ISP (Internet service provider) that has an "outgoing mail server name" and a user ID. Most free services and even some that you pay for, such as AOL and MSN, do not provide this and therefore this feature does not work with these Internet service providers. However, do not be dismayed if you use AOL. Many users prefer to print graphics to file and then place them in their e-mail message anyway as an attached file. Go to "Print to File" for details about saving a printout to file.

**Multi Select Printouts:** The Multi-Select Printouts feature allows you to select several printouts very quickly. For example, suppose that you very often select a natal chart wheel, Cosmo Natal Report, and Cosmo Forecast Report for clients. You can save this group of printout selections and call it back so that you do not need to select these printouts individually in the future.

Some users select the "Multi-Select Printouts" button primarily as a way to select the printouts that have been selected for one entry for another entry.

**Your Choice of Birth Data File:** Read chart data from WinStar, Solar Fire, and AstroDatabank directly in Kepler's Data Entry screen! There is no need to go through the tedious process of exporting and importing; the birth chart data in these programs can be read directly by Kepler. If you are a user of one of these astrology programs, you can now easily expand your horizons with Kepler's awesome features without re-entering any of your data.

## INTERPRETIVE REPORTS:

### Kepler comes with the following interpretive reports:

Cosmo Natal	Major Life Themes Report
Cosmo Compatibility	Live Mini Reading Multimedia Interpretation
Cosmo Forecast	Profile Scores
Harmonic Highlights	Nakshatras and Dasas
Numerology	AstroLocality Report
Lunar Phase Report	Vedic Insight Report

- **The Major Life Themes Report and the Live Mini Reading Multimedia Interpretation use advanced harmonics and midpoints theory.**
- The Live Mini Reading is very entertaining not only for you, but also for friends and family. The Live Mini reading is an interpretation of the birth chart based on sophisticated ideas in harmonic astrology and cosmobiology. The interpretations are clear and straightforward. The interpretations are spoken while you view gorgeous graphics and listen to background music! Liven up your next party or get-together by letting your friends watch this multi-media presentation. Even skeptics are amazed when they see and hear this reading.

The Live Mini Reading is based on sophisticated modern theories in astrology. Each interpretation is based on an interaction of 3 planets which is simultaneously a harmonic triangle and a midpoint structure. Kepler is the only astrology program in the market that has this option.

Fortunately, you do not need to know what a harmonic triangle is or a midpoint structure to appreciate the Live Mini Reading! Kepler includes an "AstroEncyclopedia" a huge reference work where you can look up these terms and many others to learn more about the technical details if you are interested in this.

For the benefit of advanced astrologers who are curious, here are some of the technical details of how the Live Mini Reading is created: Each midpoint structure must involve a conjunction or opposition with a 2 degree orb, a square with a 1 1/2 degree orb, a semisquare or sesquiquadrate with a 1 degree orb, or a 1/16, 3/16, 5/16, or 7/16 aspect with a 30 minute orb. Also, if the aspect is any aspect other than a conjunction or opposition, the 3 planets must be conjunct in a harmonic chart within a 12 degree orb; harmonic charts up to 64 and any doubles of these numbers up to 180 (for example, 80 is 40 times 2 so it is considered, but 81 is not considered) are included in the analysis. This kind of sophisticated analysis is virtually impossible without a computer properly programmed to determine these planetary patterns.

- **Almost all of the Cosmo Reports are available in other languages** such as English, Spanish, French, Portuguese, German, and Norwegian, Japanese.
- **Interpretations of planets in degrees according to 11 different authors.** Sabian Symbols are also included, but there are also other symbolic interpretations of degree meanings by other astrologers. This report provides you the degree meanings of each planet according to 11 different authors.
- **Harmonic Degree Meanings:** This report gives degree meanings and the harmonic sign influences that are presented in the book *Astrology for the 21st Century* by David Cochrane.
- **A Numerology Report can be produced:** This report analyzes the vowels, consonants, and total score of the person's name and/or birth date. Many years ago this report was the Athena Numerology Report. It is now included with Kepler.

### Live Mini Reading





## KEPLER ASTRO FONT:

Kepler has a complete TrueType astrology font. This astrological font can be used in your word processing program. Instead of writing out "Sun in Aries", "Moon in Sagittarius", "Mercury in Taurus", etc. You can instead write ☉ in ♈, ☾ in ♐, ☿ in ♉, ♀ in ♈, etc.. Use either Pluto glyph whenever you want: ♇ or ♅.

## OTHER FEATURES:

**Page Designer:** This page is very handy for editing a chart wheel. You can see the changes that you are making as you click on any menu from this box. From this menu, you can add planetary tables, move any tables anywhere on the page, resize the wheel (change the wheel's radius), change the wheels horizontal and vertical position on the page, etc. As you make the changes, you can see your changes on the screen.

**Planetary Pitches (Music of the Spheres):** Kepler can play the frequency of each planet based on a theory that the motion of a planet at any given time is similar to the motion of a vibrating string, and by transposing this frequency by octaves until it is in the audible range, one can hear the sound of the planet. Like virtually all astrological theory, this is a very speculative idea and is provided for you in case you find it interesting.

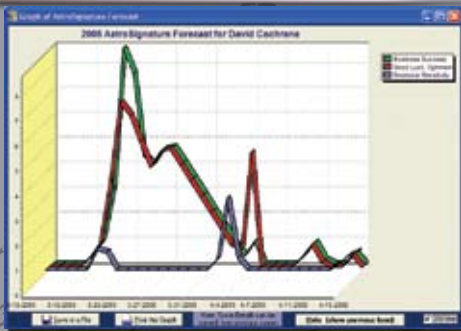
**Compatibility Profile Scores:** You can produce a list of compatibility scores between two people. You can select Romantic Compatibility or Friends Compatibility. There are 8 compatibility scores in the Romantic Compatibility assessment and there are 7 compatibility scores in the Friendship Compatibility assessment. You can change the astrological factors and weighting values used to create the compatibility scores.

**AstroSignature and Electional Forecast:** When you select "AstroSignature Forst Graph", the screen that is displayed is very similar to the screen that is displayed when you select "Electional Astrology Graph". The only difference is that the default forecast method for an AstroSignature Forecast is Transit-to-Natal while the default forecast method for an Electional Graph is Transit-to-Transit. Electional Astrology is a method of picking the best time for business success, accident proneness, etc. and new events that you are about to pursue.

**Quick selection of current transit:** A Transit Chart is usually a natal chart. Creating a transit chart wheel from Kepler is quite easy. However, make sure that the date on your computer is set to a correct date. To find out if your computer is set to a correct date and time, look at the right side bottom corner of your screen display. The date and time that is set on your computer is displayed in this corner. If this date and time is incorrect, double click on it. The "Date and Time Properties" screen is then displayed. Set the time to the appropriate time of your current residence.

**Easily Convert Julian Calendar (Old Style) to Gregorian Calendar (New Style) Date:** The Kepler program always uses the New Style calendar. When you enter a date in the data entry screen and that date is before about 1750, Kepler will prompt you to ask you if the date is in the Old Style Calendar and if you want to convert it to the New Style Calendar. Because you will be asked in the data entry screen if

### Electional Astrology Graph



### Selecting Electional Astrology graph or AstroSignature



you want to convert an Old Style date to a New Style date, you do not need to use this screen to convert dates. This screen is provided simply for your interest in case you are interested in "playing" with dates to see how Old Style and New Style dates differ.

**Calendar and Calculator:** Kepler comes with a Calendar and calculator. This option is handy when you want to view a Calendar or use a calculator while using the Kepler program.

## EDUCATION:

**Astro Encyclopedia** is a very comprehensive and thorough astrological reference work built into the Kepler program. Diagrams and images are included to help you better understand advanced subjects such as midpoint structures as well as the basics. Astro Encyclopedia also provides a huge glossary of terms and excellent articles on many topics.

**Health Encyclopedia:** The Kepler Health Encyclopedia at the current time does not contain very much astrological information. There are 3 reasons why this health encyclopedia is part of Kepler: (1) Astrology is an alternative system to more conventional systems of psychological analysis. Herbalism is an alternative system to more conventional systems of health care. People who are interested in astrology, an alternative to more commonly accepted forms of psychological analysis, are often interested in herbalism and other alternative forms of health care. (2) In ancient times astrology was widely used to assist in diagnosing health problems and prescribing therapies. The close relationship between medicine and astrology in ancient times encourages us to continue studying how astrology can be applied to health related issues, and a prerequisite for this study is having information available on health issues and health care. (3) Having this information easily available with Kepler is very convenient and useful.

## AVALON:

**Avalon** is a self-learning system that is built into the Kepler program. Avalon consists of 47 self-guided lessons, and starts at the very beginning and continues to a very advanced level of study.

Avalon includes detailed lessons, tests and quizzes (you even get graded) before you proceed to the next lesson and a logical, systematic approach that makes it possible for you to learn astrology on your own.

Avalon is a very thorough and comprehensive course, complete with graphic illustrations and tests. If you take the entire course and pass all of the tests, you will have a thorough grasp of astrological principles. In fact, you may find that you will amaze yourself with your ability to understand people by analyzing their birth charts. With additional study in advanced areas you will be able to take (and pass!) tests administered by various astrological organizations to receive certification from these organizations, and you will have the information you need to interpret charts and teach others. We recommend interpreting dozens of charts for people without any charge before beginning to charge for your services, and to devote at least a few years of study before becoming a professional in the astrological field.

If you prefer a less structured approach to learning, and you prefer to browse around, you can browse through the topics in Avalon, or you may find that Kepler's Astro Encyclopedia is more to your liking. Avalon is particularly good for people who want a complete and thorough understanding of astrology, and want to study astrology in a systematic manner, starting with the basics and progressing to more advanced topics.





## GRAPHICS LIBRARY

*of over 400 beautiful pictures:*

Kepler includes many hundreds of beautiful graphic images designed specifically for the Kepler program. These pictures are utilized in the Live Mini Reading, and included in the Cosmo Natal Report. You can also browse through the pictures, and print the images in a variety of sizes. You may also incorporate them into your word processing documents or other graphic programs.

### The graphics library consists of images of the following:

- |                         |                         |
|-------------------------|-------------------------|
| Sun in zodiac sign      | Uranus in zodiac signs  |
| Moon in zodiac signs    | Neptune in zodiac signs |
| Mercury in zodiac signs | Pluto in zodiac signs   |
| Venus in zodiac signs   | Sun Sign- Compatibility |
| Mars in zodiac signs    | Moon Sign Compatibility |
| Jupiter in zodiac signs | Compatibility Aspects   |
| Saturn in zodiac signs  | Galaxies, planets, etc, |
| Other graphics          |                         |

## BATCH AND INTERACTIVE MODE

Kepler works beautifully in both "batch" mode and "interactive" mode. You may not be familiar with the terms "batch mode" and "interactive mode" but both modes are important to make an astrology program easy and fun. You can easily check the printouts you want and send them to the printer (batch mode), or you can view printouts on the screen, select any printout desired and immediately see it and then click on the Print button to print it if you like (Interactive mode). Batch mode is great when you need a lot of printouts, and interactive mode is great when you want to "play" with the program, poking around and exploring different ideas. Kepler provides both in a very easy-to-use way.

## DATA COLLECTION:

A data collection of over 19,000 charts (people, businesses, earthquakes, athletes, etc.) is included.

## EASE OF USE:

- Data Entry is very easy to do. While you enter the person's name (or place of birth), a list of names (or places) to select from automatically appears - no hunting around or pressing keys to tell Kepler to look up the data.
- Handy features like the ability to remove the listing of famous charts so you can see only your own data with 2 mouse clicks make using the program fun and easy.
- Just do what you need to do: for example suppose you need to change the spelling of a person's name that has been saved on disk; all you do is change the spelling and the database is updated for you. Removing data is just as easy.

- Entering the Person's name and birth data: You can see at the top of the screen whether you are reading All Data, Your Data, Famous, and Third party. Two mouse clicks and you have changed which data you are accessing, and there is no slowing down of the speed at which names are read from disk.

- Entering the place of birth: you can simply begin entering the place, and then you also have the option to narrow the listing of cities to one country or state, a useful feature when you are unsure of the correct spelling.

It is always easy to read in the place of birth. Just start typing and the cities appear. But what if you are having difficulty finding the place? Select the state or country first if you like. For example, if someone is born in Cincinnati, Ohio, you might not be able to remember the correct spelling: is it "Cincinnati" (correct) or "Cincinnati" (incorrect), etc. By selecting "Ohio" first it reduces the number of cities to select from thereby making it much easier to find the town you are looking for. Entering a place is not case sensitive.

- Entering the name and place of birth is not case sensitive: In other words, if the person's name is "Smith,Bill", you no longer need to enter "Smi"; you can now enter "smi" or "SMI", for example, and the name will still be found.

- Seemingly complex requests like a BiWheel with Jack's natal chart in the center and Jill's progressed chart on the outside are very easy to do.

- Windows displaying wheels, interpretive reports, and AstroMaps can be viewed simultaneously on the screen. You can move between them or resize them, send them to file or print them.

- Seemingly complex requests like a BiWheel with Jack's natal chart in the center and Jill's progressed chart on the outside is very easy to do.

- Visual previews that show you the AstroMap, wheel style or wheel feature that you are selecting make it easy to get exactly the printout desired before you view or print it.

- Customize a wheel while you select it, and also make these selections the new default if you like.

- Easy Conversion of Old Style Calendar (Julian) to New Style Calendar (Gregorian).

- Edit the text in an interpretive report.

- Translate an interpretive report into other languages.

- Create your own interpretive report.

- Read chart data from WinStar, Solar Fire, and AstroData Bank directly from Kepler's Main Data Entry screen.

- Enter dates in European style, Day/Month/Year as well as American style, Month/Day/Year.

- Easy to change Company Name.

- Easy to change orbs in chart wheels, interpretive reports, midpoints structure, transits, etc.

- **Printing to file is easy:** You can select a default directory for reports to be printed to, and you have the option to save files in Rich Text Format (RTF), plain Text Format (TXT), and HTML Format. Files saved in Rich Text Format can be read into a word processing program and retain most formatting characteristics. You can also save the file in any directory that you want to use. Not only that, you can also save the report with any name you prefer to use.

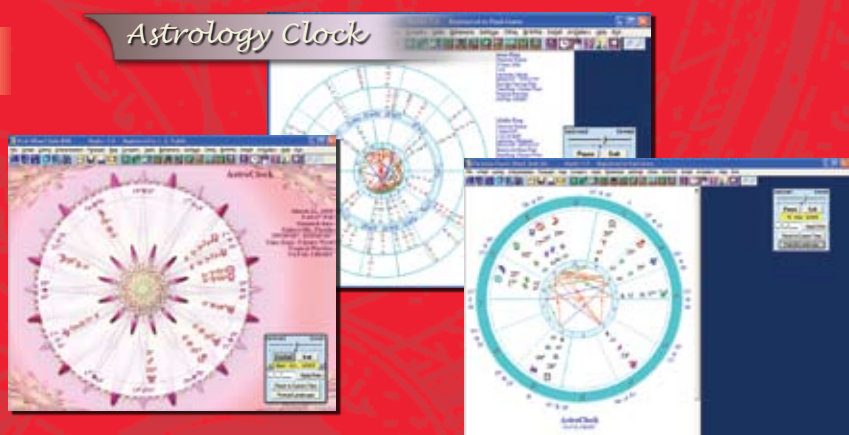
- Any printout being viewed on the screen can be printed by simply clicking on the print icon, can be saved to file by clicking on the save icon or send it via e-mail by clicking on the e-mail icon .

- Easily set a default place to use in AstroMap.

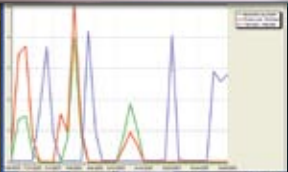
Over the years we have refined the program with attention to little details like those mentioned above to make Kepler fun to use. The above list is a sample of some of the features that make Kepler easy to use, and is not a complete list.

## ASTROLOGY CLOCK:

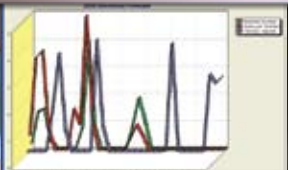
You can view the current positions of the planets in real time with Kepler's Astrology Clock feature. You can select the place so that it calculates an Astrology Clock wherever you are. You can also select any chart wheel style, pause the clock, accelerate it, and jump to any date.



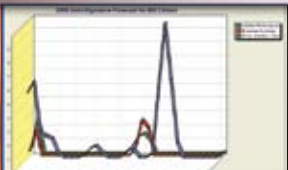
### *Astro Signature Graph*



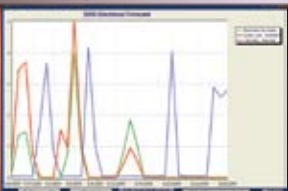
### *Astro Signature Graph 3D*



### *Astro Signature Forecast for 1 person*



### *Assumptionless Research*



### *Match Making Compatibility*



### *Assumption Less Research*



## KEPLER RESEARCH

**Research Capabilities:** For the research-oriented astrologer there is research capability. You can find out which charts have a particular aspect or planet in a sign or house. For example, you can find out which charts have Sun trine Jupiter. You can also select a specific range of research codes to study particular groups of people, such as just athletes, or just basketball players, or just musicians, or just singers, or just jazz singers.

Kepler has highly sophisticated research capabilities. In addition to basic research capabilities, Kepler can analyze all angles between all planets and print a sorted list of which angles occur most often. This is "assumption-less" research and it can reveal startling new information. This kind of research is designed for serious researchers who are willing to take days or weeks to analyze and think about the research results. If you are a serious researcher, this is a tool that is likely to open new doors for you!

The next step in the research process is even more exciting. Suppose that you decide from the research results that the group of people you are studying is more likely to have Sun conjunct, square, or opposition Saturn, Moon in Capricorn, or also Moon, Mercury, and Venus in hard aspect to Saturn. You also conclude that the Sun square Saturn aspect is most important, Sun opposition Saturn is next most important, etc.

You can create an "astrological signature" with the exact weights that you want for each astrological factor that is part of the astrological signature. Your astrological profile can be as complex as you like, and you can even have factors such as: "if Sun is in Capricorn and Moon is in Capricorn, give 10 points, but if only the Sun in Capricorn give 5 points, and if only the Moon is in Capricorn, give 3 points". Developing these complex rules for your astrological signature is not trivial; this is a tool for the serious researcher. These are tools that enable one to validate astrology and are for the serious-minded researcher.

Kepler includes 4 hypothetical astrological signatures that were developed with this research capability: alcoholism, image consultant (a profession), football quarterback, and baseball pitcher. If additional research confirms these astrological signatures, then these hypotheses become theories that if repeatedly duplicated become the beginnings of a science of astrology.

If this level of serious research is not your cup of tea, that's OK. Kepler provides a vast amount of information for various kinds and levels of interests. You can enjoy the results of the research in any case by running the hypothetical astrological signatures on people you know to see what scores they get.

When researching Aspects, Midpoints, or Harmonics you can compare the frequency that occurs in the chart being studied to the frequency that occurs during any time period.

## SOME HIGHLIGHTED RESEARCH FEATURES

**AstroSignature research:** allows you to produce a sorted list of scores on a personality characteristic. You can also modify the AstroSignature formula or create your own AstroSignature. There are many helpful advanced features in the AstroSignature research that make customizing your own AstroSignature very easy, and also to be able to use astrological factors that go beyond the basic planets in sign, house, and aspect, such as midpoint structures, 3-planet and 4-planet harmonic patterns, harmonic signs, rulerships, and the ability to produce a score only if 2 or more astrological factors occur simultaneously.

AstroSignature research allows you to do very sophisticated research very simply. It is a wonderful tool for simply seeing what charts have the strongest emphasis or for using this information to select the most appropriate people from a group of charts you have entered for a particular purpose, or to test an astrological theory.



**Match Making:** The Match Making research feature is very similar to the AstroSignature Research feature described above, except it analyzes the compatibility between two charts instead of one chart.

The Match Making research feature allows you to produce AstroSignature scores for pairs of people, whereas the AstroSignature research feature described above is for individuals. As with the AstroSignature research feature for individuals, you have a wide range of astrological factors that can be included in building the AstroSignature, and you can include an analysis of synastry (aspects between the charts and planets in one another's houses) and you can use the "AND" function to combine together astrological influences to include similarities of aspects or sign positions in your Match Making AstroSignature. You can also analyze astrological influences in the composite chart. Note that an analysis of all scores between two groups of people can take some time to calculate because, for example, if you have 100 people in each of the two groups, there are almost 10,000 possible pairs of people and all 10,000 combinations will be analyzed. If there are 1,000 charts in each of the two groups, there are almost 1 million possible pairs of charts that will be analyzed! We call this feature the Match Making research feature because it allows you do exactly that: match people together.

**Pairs (Relationships/Events) Research:** Pairs Research is similar to Match Making research in that two charts are compared, but in Pairs Research, you specify which two charts should be paired. Suppose, for example, that you want to compare birth and death charts, or birth charts and accident charts, or husbands and wives. You want to know what happens at the time of an accident, at the time of death, or what brings two people together and become married. Pairs research allows you to do exactly this kind of research. You pick which two charts are paired, and the research is done based on this pairing. Match Making research searches through groups to find out which charts score highest in various compatibility AstroSignature scores, whereas pairs research allows you to research charts that are already paired (such as husbands and wives, or natal charts of people with the dates of accidents) to discover what is occurring in these paired charts.

**Forecast Research of 1 Day:** This research feature allows you to compare a group of charts to find out which chart is most strongly activated on a given day. For example, you can create an accident-proneness AstroSignature and see which charts are most inclined to accidents on a given day according to the AstroSignature that you have created. Another example of how this feature can be used is to create an AstroSignature for influences that cause a company stock to go up, and then compare charts of companies on a given day to see which stocks are predicted to go up the most on a particular day. In addition to obtaining the total scores, you can view the details of what specific astrological influences contributed to the total score. You can combine together up to 32 different predictive methods by simply clicking the methods you want. This feature allows you to conduct serious forecasting research.

### **Electional / AstroSignature Forecast of 1 Chart:**

This research feature allows you to see a graph of an upcoming time period for one chart or for the transiting planets in the sky. You can obtain a line graph of athletic performance for the next 6 months, for example. This allows you to pick the best date for an athletic competition for this person by simply looking at the graph. You can also view the specific astrological influences that contribute to the score on each day. You can look at transit-to-transit graphs (which some astrologers like to analyze for picking the best date for an event (electional astrology) as well as 31 other predictive methods (transit-to-natal, secondary progressed-to-natal, etc.).

**Assumptionless Research:** This research features allows you to explore what planetary angles occur in a group of charts. Rather than research, for example, the occurrence of a Mars trine Jupiter aspect in the charts of athletes because you suspect that successful athletes are more likely to have a Mars trine Jupiter aspect than other people, you can look at the distribution of the Mars-Jupiter angle in the charts of athletes to see what angles show up. You can even include a graph of the random distribution as well, so that you can compare your findings to a random distribution; this is very helpful because a Mars trine Jupiter angle or any other angle is not likely to be equally distributed around the zodiac by chance.

The Assumptionless Research feature is powerful, allowing you to see what relationship two planets have to one another in a group of charts. You can use the Assumptionless Research to casually observe what planetary angles occur in a group of charts, or you can use this information to build your own AstroSignature that can be tested in research. These tools are fun as well as being so powerful that you can conduct research at a very sophisticated level.

**Midpoints and Harmonic Patterns:** This research feature allows you to research a specific angle or harmonic, or to view the distribution of harmonics or the distribution of the angle of one planet to the midpoint of two other planets. This research feature therefore provides more Assumptionless Research features for exploring distributions of harmonic patterns and midpoint patterns as well as researching a specific pair of planets or midpoint structure. The range of kinds of Assumptionless Research that you can do is tremendous.

**Specific Astro Factors:** These research features allow you to find out which charts have a planet in a particular sign or house, or other factors like a planet in particular degrees. These research features provide you a handy way to see which charts have a particular astrological factor in common. You can also analyze a combination of two astrological factors here. For more complex combinations of astrological influences, use the AstroSignature research feature described above.

**Specific Astro Factors for Compatibility:** This research feature allows you to find out which pairs of charts have a particular aspect between two planets or a particular planet in a house.

## KEPLER WORKSHOP

Within the Kepler program is a software that we call Kepler Workshop. Kepler Workshop can produce the following printouts: the Graphic ephemeris, Text ephemeris, Eclipse maps, and the following Vedic calculations: Charts and Vargas, Gochara, and Dasas and Bhuktis.

A few of the powerful features of Kepler Workshop are: combining natal, secondary progressed, solar arc directions, and transits in a graphic ephemeris, customizing line width and colors in the graphic ephemeris, putting more than one eclipse path on a map, and producing a text ephemeris in tropical or sidereal, and including transneptunian planets and/or major asteroids.

### **Planets or Asteroids Text Ephemeris:**

The text ephemeris is a listing of planet positions each day. This listing is similar to the listing found in ephemeris books.

**Moon Calendar:** It shows the date, current location of the moon on specific day, the illumination, the distance in km, and moon phases. You can set the calendar to any date from the range of 1900 to 2100 AD. You can select from 1 up to 12 months moon calendar.

**Star Catalogue:** the Star Catalogue allows you to view a table of fixed star positions for anyone's chart. The Star Catalogue is also a valuable reference tool because you can sort over 10,000 fixed stars by the common astrological name, astronomical name, constellation, magnitude, longitude, latitude, right ascension, or declination.

**Sky Map:** A map of the sky for any chart can be displayed on the screen. You can view a circular representation of the sky that was above the horizon, and another circular representation of the sky below the horizon. These circular representations give a fairly accurate image of how the sky actually looked. Because the computer screen and a piece of paper are in 2 dimensions and the stars in the sky are placed like lights inside a sphere, any representation on the computer screen or on a piece of paper is not completely accurate, but viewing the sky in 2 circular halves gives a rough approximation. You can also view the sky in a rectangular coordinate graph as well. You can also view the planets from the perspective of the ecliptic plane or equatorial plane, as well as the horizon plane.

The ecliptic, equatorial, and horizon planes are also drawn in these Sky Maps, giving you a picture of how planets and fixed star positions vary depending on the coordinate system you use. These Sky Maps give you a better idea of what the sky actually looked like at the time of someone's birth than a traditional astrological chart wheel does, and can give you a new perspective and appreciation of the appearance of the sky. The ability to easily choose a perspective based on the ecliptic, equator, or horizon and to choose either a circular or rectangular presentation makes the Sky Maps feature of Kepler very flexible and easy to use.

**Graphic Ephemeris:** A Graphic Ephemeris is a visual presentation of transits and/or progressions in relationship to a natal chart. The graphic ephemeris was popularized by Reinhold Ebertin and other astrologers who use the system of astrology known as cosmobiology. A popular feature used in the cosmobiology school of astrology, but very powerful and fascinating for all astrologers. You can combine transits, progressions, and directions in one graphic ephemeris. The color coding helps distinguish the various planets. A 45 degree, 22 degree, 30 degree, and other ephemerides can be

viewed. You can also view a graphic ephemeris of declinations or latitudes of the planets. You can include the 4 major asteroids, Chiron, and transneptunian planets if you wish.

**Eclipse Map:** An eclipse map is a map that shows the path of the shadow on the earth that is created during a solar eclipse.

**Vedic: Chakras and Vargas:** Vedic astrology differs from western astrology in many ways. There are 2 styles of Vedic chart wheels, the North Indian and South Indian style, and both of these styles are different from the traditional western style round wheel. Planetary strengths are calculated using complex formulae, and there are 16 "divisional charts" or "Vargas" that are used. The planets Uranus, Neptune, and Pluto are not included. All of these basics of Vedic astrology are included in this part of Kepler Workshop.

**Vedic: Gochara (Transits):** In Vedic astrology, like Western astrology, one method to forecast the future is to compare the positions of the planets in the birth chart to the day you want a forecast for. In Vedic astrology, a complex set of rules based on the number of signs apart between the natal and transiting planets is used, and this system is known as Gochara.

**Vedic: Dasas and Bhuktis:** One of the most important, if not most important, methods for forecasting in Vedic astrology is a system of planetary periods. According to this theory, a particular planet has a particularly strong influence over one's life during certain periods of your life. There are also sub-periods within the larger periods. These planetary periods are known as dasas and bhuktis.

**Ashtakavarga:** Ashtakavarga is a system which is used to measure the strength of houses and planets which are in these houses. These can be transiting planets or planets in the birth chart. The theory behind Ashtakavarga is that every planet is able to cast benefic rays. He is capable of doing so not only from the planet itself but also from the position of other planets. As an example: The Moon is able to cast benefic rays from itself, but also from the Sun, Mercury, Venus, Mars and so on. The benefic rays are not distributed randomly. They are distributed at certain distances measured in houses from the birth chart position of a certain planet and from the birth chart position of other planets. This feature is included in Kepler.

**Chart Explorer:** Interactive Vedic interpretations; as you place the cursor on a planet, you can read the interpretation of that planet in relationship to the house that it rules. You can view these interpretations for any varga chart.

## Vedic Calculations, Heliocentric and Altitude-Azimuth Charts

The Ayanamsha, which is the difference between the tropical and sidereal zodiacs, can be easily selected from a menu. You can also enter a custom value.

**Vedic calculations:** Dasas and Bhuktis, Shad Bala, Nakshatras, Vargas, and Gochara. You can also produce the Vedic square chart wheels styles (both North Indian & South Indian style). You may also print the wheel in Western style (circle).

Kepler provides you with all of the fundamental features of Vedic astrology. You can print the Nakshatras of your Moon, with a chart interpretation of its meaning, and a listing of the planetary periods (dasas and subdasas throughout the life time of the person).

**Vedic Chart and Vargas:** Vedic astrology differs from western astrology in many ways. There are 2 styles of Vedic Chart wheels, the North Indian and South Indian style, and both of these styles are different from the traditional western style round wheel. Planetary strengths are calculated using complex formulae, and there are 16 "divisional charts" or "vargas" that are used. The planets Uranus, Neptune, and Pluto are not included. All of these basics of Vedic astrology are included in Kepler.

**Heliocentric and Altitude-Azimuth Charts:** You can print chart wheels, and also other printouts like midpoint structures and harmonic chart listings in heliocentric or altitude-azimuth coordinates.

Two different variations of altitude-azimuth positions are provided, and you can also produce printouts with right ascension positions. Heliocentric chart wheels, and heliocentric transits and progressions can be produced.

**Kepler WorkShop AstrologyClock:** In addition to the AstrologyClock that is in the Kepler program, the Kepler WorkShop also has a built in AstrologyClock.

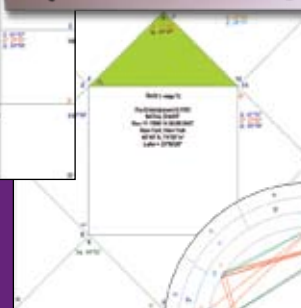
## STORE DATA ON DISK

**Store Birth Data on disk and have notes with each person:** Kepler stores data on disk that can be easily looked up later, or to help you research the data. You can have notes (up to 360 characters) with each person's birth data. The notes section is helpful if you need to record a special note about this person, and it is also used to give some information about the famous people and businesses that are included with the Kepler program.

*Vedic Chart  
(South Indian Style)*



*Vedic Chart  
(North Indian Style)*



*Vedic Chart  
(Western Style)*



## KEPLER NEWS

New options and new versions of Kepler come out periodically, once or twice a year on the average. We mail out the newsletter, "Kepler News" to customers about once a year. We do not sell our name data base so don't worry about receiving junk mail. If you have an e-mail address, we send out an e-mail notice of new features about twice a year.

## CUSTOMER SUPPORT

We provide fast, efficient service and excellent customer support. Virtually all of our customers are extremely pleased with both the performance of our software products and the level of assistance that we provide. Most customers prefer to e-mail their questions to us at kepler@astrosoftware.com. We respond to e-mail within one business day. You can also call us at 352-373-1504. Our office hours are Monday to Friday, 9am to 5pm Eastern time.

If you cannot call us for customer support during our office hours, let us know. We can set an appointment for you to call us during off hours on weekdays only.

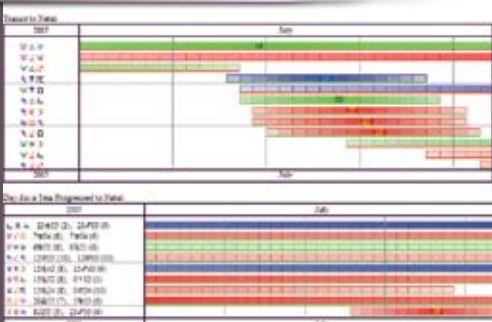


## YOUR OWN WEBSITE

If you own Kepler Ver 4.7 or the latest version of Kepler and at least one of the optional interpretive reports, then Cosmic Patterns will create for you, free of charge, a web site with your own astrology chart service. On your chart service will be offered the interpretive report options that you own. Here are some of the details of how this works:

- Your web site address is: [www.AstroSoftware.com/astro/09764.htm](http://www.AstroSoftware.com/astro/09764.htm) where, "09764" is your customer number. If you have a web site, you can link to this web site from your web site.
- Your web site will be created at the end of the week. This web site is not editable.
- The interpretive reports that you own are offered on your automated chart service.
- Your web site will be updated weekly with any new reports you add.
- A free chart wheel is also provided!
- All of the maintenance, credit card processing, bank fees, etc. will be taken care of by Cosmic Patterns.
- You will also receive an itemized list of the number of sales of each report. Please let us know your new mailing address if you move so that you will receive your check payments. All costs associated with the purchase (credit card fees, bank fees, computer operations, etc.) are paid by Cosmic Patterns.
- You will receive 40% of the amount paid by the customer. You will receive a check 4 times a year for any sales on your web site.
- If you have a web site, let us know the address of your web site, and we will put a link on your chart service web site back to your web site.
- There is nothing to do! You don't even have to have an internet account (If you do not wish to provide this service, simply do not advertise your online chart service).
- Your automated chart service is attractive and professional! Your customers receive the report displayed on their screen, and an e-mail message thanking the customer for the order and providing a link for them to see their report for up to 3 days after purchase. This entire service is provided for you and maintained for you by Cosmic Patterns; you need to do nothing but advertise your service; we take care of the rest for you!

### Time Line Format



## DETAILS AND SAMPLE PRINTOUTS

**Time Line Format:** In creating the Time Line Forecast, you are not limited to using one forecast method. Check as many of the forecast methods as you like. For example, you can select Transit-to-Natal, Day-for-a-Year Progressed to Natal, Day-for-a-Year Progressed to Progressed, and Solar Arc Progressed to Natal if these are the forecast methods that you prefer to use. You can also select many kinds of progressed influences by checking the methods that you want.

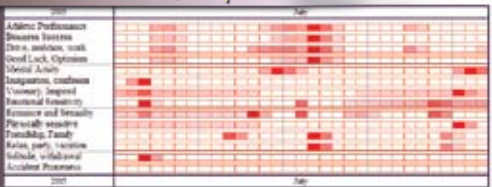
The time line format has the advantages of allowing you to quickly and easily see what astrological influences are occurring, when they occur, and how strong they are at any time. After making your selections, you can scroll through the list of transits and progressions without needing to jump between printouts.

You can select the duration of 1 to 12 months or just one day.

The Time Line Format allows you to glance down the screen (or page, if you have printed it) to see exactly what aspects are in effect and how strong they are. You can, of course, include planet-to-midpoint, or midpoint-to-planet, or minor aspects, and you can choose which planets you want to include in the printout. Parallels of declination can also be included.

In the Time Line format, you also have an option to display house positions of the planets, and display position of planets either by sign only or by sign-degree-minutes.

### Time Line Profile



### Eclipse Information and Declination



The calendar date is printed periodically so that while scrolling through the printout, you can see what the dates are without needing to scroll up and down repeatedly. Also, the date when the aspect is exact now appears in the time line printout.

**TimeLine Profile:** The Time Line Profile is calculated based on what aspects are in effect at a given time, how close to exact the aspect is, and what weighting is given to each aspect. You can, for example, assign 10 points to transiting Mars square Uranus, and 8 points to transiting Sun square Mars. You can change the weights that we have assigned to the aspects and midpoint structures for each category. You can also produce Time Line Profiles with, or without, midpoints.

**Eclipse Information and Declination:** In the section of the transit-to-natal listing above you see "(SE)" displayed after one of the transiting Sun aspects. "(SE)" indicates a solar eclipse. You have the option of detecting that a solar eclipse or lunar eclipse is making an aspect to a natal planet. Kepler denotes this by printing "(SE)" (solar eclipse) or "(LE)" next to the transiting Sun to natal planet aspect. You can also detect not only eclipses but all new moons and full moons as well. These are designated by "(NM)" (new moon) and "(FM)" (full moon). Kepler can also detect transiting and progressed declinations. In the printout above, the 8th aspect listed is transiting Sun parallel natal Uranus.

**Paran Listing:** Parans are used by some astrologers for relocation analysis. According to this theory, there are certain geographic latitudes where a particular pair of planets is particularly active.

**Fixed Stars:** Kepler can produce a list of conjunctions to fixed stars. Typically, an astrologer would select conjunctions of planets to 361 named fixed stars with an orb of 1 degree. For something very different, you can select conjunctions within a 10' orb of planets to over 8,000 fixed stars and fixed points! You can also select conjunctions that are conjunctions in longitude and latitude (near occultations).

**Obtain a list of fixed stars** that are on the horizon, at the zenith, or at the nadir.

**Produce lists of conjunctions to fixed stars** in longitude and in both longitude and latitude (near occultations) with options to include thousands of fixed stars or just the named fixed stars.

**Ability to see which stars are on the horizon,** at the zenith, and at the nadir. Note that the zenith is not the same as the MC. The MC is the point on the ecliptic plane that is directly south. The zenith is the point overhead, and the zenith has rarely been looked at in astrology before. Planets and fixed stars on the horizon were considered very important in much of ancient astrology but in modern times astrologers generally either do not use fixed stars or only use conjunctions to fixed stars in longitude to the planets.

Revives some of the features of ancient astrology while also opening doors to new possibilities that have not been explored before, such as fixed stars at the zenith or nadir.

Many astrologers believe that each zodiac degree has a unique meaning. The Sabian Symbols popularized by Marc Edmund Jones and Dane Rudhyar are a very popular example of this theory. Kepler can produce Sabian Symbols for the planetary positions and also for angular separation between planets, as used by Robert Blaschke.

**Rectification:** Rectification in astrology is the process of checking various events in a person's life against their chart to determine the accurate time of birth if the birth time is not known. Important events with specific date are used to certify a chart. If you already know your birth time (usually listed on a birth certificate) you do not have to use this feature. This feature is included in the Kepler program. Enter important dates such as marriage, birth of children, accidents, relocating, etc., and the predictive methods desired, and Kepler produces a total score for how well the dates could have been predicted based on this birth time.

## Sabian Symbol Degree Interpretation

### Sabian Symbol Degree Meanings

Sun is 18-19 deg Gemini  
A Large Archaic Volume Reveals A Traditional Wisdom  
Moon is 1-2 deg Taurus

### Planet-to-Planet Sabian Symbol Degree Meanings

Moon is 292-293 dep past Merc (22-23 deg Capricorn)  
A Soldier Receiving Two Awards For Bravery In Combat  
Moon is 358-359 deg past Ven (28-29 deg Pisces)  
Light Breaking Into Many Colors As It Passes Through A Prism  
Moon is 313-314 dep past Sun (13-14 deg Aquarius)  
A Train Entering A Tunnel  
Moon is 252-253 deg past Mars (12-13 deg Sagittarius)  
A Widows Past Is Brought To Light

## Fixed Stars

### Conjunction to 361 Fixed Stars

92 most commonly used fixed stars:  
Moon Conjunction Mira, Orb: 0 deg. 28 min.  
Venus conjunct Sheratan, Orb: 0 deg. 28 min.  
Mercury Conjunction Alhena, Orb: 0 deg. 47 min.  
N. Node Conjunction Praecipua, Orb: 0 deg. 34 min.

### Conjunction to fixed stars, pulsars, black holes, etc. with a 1 degree orb:

Conjunction to fixed stars, pulsars, black holes, etc. with a 1 degree orb. These conjunctions are measured in direct distance between the star and the planet.

### Conjunction to fixed stars, pulsars, black holes, etc. with a 10 minute orb:

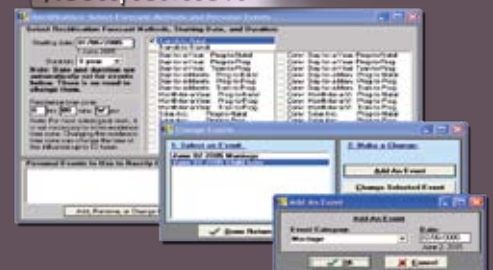
Jupiter Conjunction Maaz, Orb: 0 deg. 06 min.  
Sun Conjunction Haedi, Orb: 0 deg. 07 min.  
Mercury Conjunction Mebsuta, Orb: 0 deg. 03 min.  
MC Conjunction Sarin, Orb: 0 deg. 10 min.  
Saturn Conjunction Anser, Orb: 0 deg. 09 min.  
MC Conjunction alAps, Orb: 0 deg. 10 min.  
Neptune Conjunction thCrB, Orb: 0 deg. 04 min.  
Jupiter Conjunction laHyi, Orb: 0 deg. 04 min.  
Asc. Conjunction MuMen, Orb: 0 deg. 01 min.  
Saturn Conjunction 2525, Orb: 0 deg. 00 min.  
Asc. Conjunction GN Cyg, Orb: 0 deg. 01 min.  
Venus Conjunction 64 Cet, Orb: 0 deg. 04 min.  
Sun Conjunction Cet, Orb: 0 deg. 03 min.

## Paran Listing

Paran Listing for:  
Michael J. Fox June 9, 1961 12:15 AM  
Edmonton, Canada 53 N 33 113 W 28  
Tropical Placidus Standad time observed  
GMT: 07:15:00 Time Zone: 7 hours West

- 60N23 Bergen (5E20)
- 59N55 Saint Petersburg (30E15)
- 59N55 Oslo (10E45)
- 59N39 Moon Upper, Pluto Rising (24E41)
- 59N39 Solikamsk (56E47)
- 59N34 Magadan (150E48)
- 59N34 Uranium City (108W36)
- 59N33 Yakutat (139W44)
- 59N31 Sun Rising, Saturn Upper (64W53)
- 59N20 Stockholm (18E03)
- 59N16 Venus Upper, Pluto Rising (25E27)
- 59N16 Cassiar (129W40)
- 59N07 Palana (159E58)
- 58N52 Sun Setting, Venus Lower (154W33)
- 58N49 Fort Nelson (122W39)
- 58N40 Mercury Rising, Uranus Lower (41W11)
- 58N37 Aldan (125E24)

## Rectification



## ASTROMAPS FOR THE 21ST CENTURY:

With the traditional AstroMap, you cannot see exactly how far away from the line the influence extends. The AstroMap style with blue-shaded orbs solves this problem by displaying a blue-shaded area around each aspect line that shows how far each aspect line extends. These blue-shaded areas clearly indicate how far the astrological influence extends.

AstroMaps are wonderful. You can see lines going through a map that show where a particular planetary planet influence is very strong for you. However, until now it has not been possible to see exactly how far the influence extends away from the line, so you cannot determine exactly what areas are affected by the lines.

Now the Kepler program allows you to print AstroMaps with a blue-shaded area surrounding the aspect line so you can see what area the influence extends to. You can change the orb, if desired, as well. These new AstroMaps with blue-shaded orbs make all other AstroMaps obsolete.

For AstroMaps with blue-shaded orbs and Treasure Maps you must use longitude, but for traditional Astromaps which have only lines, you can select longitude or in mundo calculations.

An AstroMap with in mundo aspects is very interesting; the planetary aspect lines criss-cross each other in the map rather than being mostly parallel.

**Treasure Maps:** The Treasure Map is a very useful and exciting. You can now print an AstroMap that focuses on certain areas of life. There are 10 Treasure Maps that you can create: Love and Romance, Vocation and Career, Friendship and Family, Imagination and Inspiration, Excitement and Instability, Friendship and Family Detailed Map, Education and Communication, Culture and Creativity, Optimism and Opportunity, and Responsibility and Focus.

The Love and Romance Treasure Map, for example, shows areas of the world where love and romance are more likely to be drawn to you. The most powerful areas are shaded in red, and less powerful areas are shaded in yellow. Treasure Maps allow you to provide the information that you really want to know about.

The Treasure Map, like the Profile Time Line discussed above, is calculated based on the strength that you give each aspect, and also the orb of the aspect in that location. For example, you can give 10 points to Venus conjunct the relocated Ascendant, and 8 points to Venus sextile the relocated Ascendant if you like. Many of our customers have found that including midpoints in their AstroMaps improves their accuracy. Treasure Maps include relevant midpoints and minor aspects, which you will find are not so "minor" in their influence. Vedic astrologers have used noviles for centuries, and they are powerful in AstroMaps as well. You can also change which aspects are included in an AstroMap or Treasure Map and the orbs used.

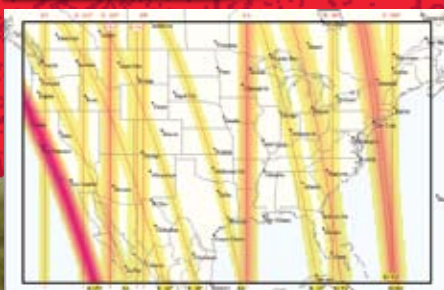
**Map Guides and Interpretations:** You can print a listing of what the lines in an AstroMap mean. You can give this to your customers (and study it yourself as well, of course) to learn what all those lines and colored areas on your map mean. You can click on a specific point on the map displayed on the screen. The interpretation for that specific point is then automatically displayed on the screen.

**Technical Features of AstroMaps:** There are 2 ways that astrologers calculate AstroMaps: in longitude and in mundo. A discussion of these technicalities would be quite lengthy, so we won't get into it now, but suffice it to say that astrologers typically make calculations in longitude; that is how birth charts and the vast majority of astrological analysis are done. However, some astrologers prefer to calculate AstroMaps using in mundo positions. In Kepler you can easily select either in mundo or longitude positions for traditional AstroMaps.

*Astromaps*



*Treasure Map*



## KEPLER'S SCREEN AND CHARTS:

**Kepler's Opening Screen:** When you first start the Kepler program, the opening screen is displayed. If you are a first time user, click on the "Main Screen" icon to start using the program immediately. All of the menus on this screen are available at the Main Screen as well. It is not necessary to come back to this screen to access most functions. On this screen you can select "Encyclopedia" to look up an astrological topic or term, or select "Avalon School" for a self-guided astrology course. "AstroSearch" brings you to the research part of Kepler. Select "Help" for the on-line manual. "Customize" and "Edit" are used to set default values and make other custom changes.

**Kepler's Main Screen and Data Entry Screen:** This is the primary place where you do almost everything in Kepler. The Opening Screen of Kepler is the screen that appears when you start the Kepler program. You will need to return to the Opening Screen only on very rare occasions. All of the customizing features, access to Avalon School, the AstroEncyclopedia, Help, Health Encyclopedia, and other features are accessible from the Main Screen, so it is very likely that you will almost never need to leave the Main Screen of Kepler.

The "Main Screen" icon is the large icon in the center of the Opening Screen. When you click on it, you are asked if you are starting a New Session or Continuing a Previous Session. If you want to retain the entries that you were using the last time you used Kepler, then you want to continue the previous session. If you cannot remember what you were doing the previous time that you used Kepler, most likely you want to start working on a new set of charts and you can select New Session to do this.

**Selecting Chart Wheels:** Although Kepler comes with hundreds of chart wheel style to choose from, selecting chart wheel style to use is a breeze. Simply right click on the screen and then select the chart wheel style that you want to use. You can even set your chart wheel style favorite as the default chart wheel style on a click of a button.

**Viewing Chart Wheels and Printouts on the Screen:** Viewing chart wheels and printouts on the screen is a breeze. Simply select the printouts that you want by clicking on "Wheel", "Interpretation", "Maps", etc.

While viewing the wheel, you can easily select a different printout to view by right clicking on the screen. The "Wheel Style" screen is then displayed. Select the chart wheel style that you like. As you click on one of the chart wheel style on the list, you will see an actual size preview of the chart wheel on the screen. Suppose you would like to see the midpoints, or the Cosmo Natal interpretation, or Major Life Themes interpretation: simply click on the midpoints icon or click on the interpretation icon and then select the printout that you want. Many users enjoy this "interactive" way of making selections, while others prefer "batch" selection during entry of the birth data. If you want a printed copy of a printout, click on the printer icon. E-mailing the printout displayed on the screen is simple, simply click on the e-mail icon. You have to however set up the e-mailing system in Kepler to recognize your service provider.

**Selecting Astromap:** Selecting an AstroMap in Kepler is very easy. Simply click on the AstroMap icon and then select the AstroMap style that you want to create. For each of the four basic styles of AstroMaps, there are specific AstroMap styles that you can select.

### Kepler's Opening Screen



### Main Screen



### Selecting Chart Wheels



### Chart Wheels on Screen



### Select AstroMaps



An appropriate specific AstroMap style will be selected for you automatically, and other appropriate map styles appear in bold. For example, for the entire world and a basic map style of AstroMap with Blue-Shaded Orbs, or AstroMap with Just Lines, AstroMap Style 1 is automatically selected, and AstroMap Style 6 is in bold because it is also an appropriate AstroMap style.

**Astromap Displayed On The Screen:** Displayed above is a Local Space Map of the World. A local space map shows the direction of planets from the place of birth. For example, if Venus was directly east when you were born; then the Venus line runs east and west from the place of birth. A variation of the Local Space Map is the Horizon Map. Local Space Map is one among the many options of AstroMap in Kepler. The other maps are Horizon Map, Geodetic Map, and zodiac sign map. Kepler also has other regular maps of course and the treasure maps.

### Match Making Research



**Match Making Research:** This feature is identical to the AstroSignature Research feature, except it shows scores for pairs of people. You can, for example, compare a group of charts of single males with a group of charts of single females that you have collected, and obtain a sorted list of scores on "Romantic and Sexual Attraction" and several other categories.

The Match Making research feature allows you to produce AstroSignature scores for pairs of people. It is very similar to the AstroSignature Research feature, except it analyzes the compatibility between two charts instead of one chart. You can also analyze astrological influences in the composite chart. With this feature, you can easily transfer from the list of pairs and the list of score details as shown on the picture above.

### Selecting Coordinate System



**Selecting Coordinate System:** Kepler comes with 28 coordinate systems to choose from. A complete list is listed towards the front of this catalog along with the alphabetical list of features in Kepler. Although Kepler has this many coordinate systems to choose from, selecting a coordinate system is a snap. Simply click on "Settings", then select "Coordinate Systems" and then select the one that you want to use from the list. The chart with the specific coordinate system selected is then automatically displayed on the screen.

**Selecting Interpretation Is a Snap:** Kepler comes with 11 written interpretations to choose from. Some of the interpretations that are included in the Kepler program are also available in other languages such as Spanish, French, German, Norwegian, and Portuguese. You can also purchase add on interpretations software from our Report Options list. Selecting or producing interpretations in Kepler is a snap. Simply click on "Interpretation" or on the interpretation icon. You can select the category that you want to use. If you want to produce a Solar Return or Progressed chart interpretation for example, simple select this category.

### Interpretations



**AstrologyClock:** The AstrologyClock in Kepler is fun, exciting, and versatile. You can easily change the AstrologyClock location, pause the clock at anytime by clicking on the "Pause" button or click on the "Restart" button to re-start. Speeding or slowing down the clock or simply running it in reverse is also very easy and flexible. Simply move the dial to the right to move it fast forward or move the dial to the left to move the clock in backward movement. Use any chart wheel style with the AstrologyClock. The best chart style to use is any of the ArtWheels. With this example, we used ArtWheel style KDB from our optional ArtWheel pastel collection CD.

### Astrology Clock



**Animated Triwheel:** The Animated TriWheel works the same way as the AstrologyClock except that it uses three entries; Natal (in the inner ring), Progression (in the middle ring), and Transit (in the outer ring).

We have many more sample screens that we can show you but we will stop here. Instead, we will show some sample screens from Kepler WorkShop.



## SOME KEPLER WORKSHOP SCREENS

Displayed is the KeplerWorkShop screen with 2 Vedic charts selected. There are 16 Varga charts to choose from. You can view the charts in horizontal or vertical position by clicking on the "Charts Orientation" icon. This option is very useful if you have multiple Varga charts selected. As shown above, you can also easily remove or add a planet on the Varga chart. You can also point on a planet and view the interpretation on the "Chart Explorer" screen. Below the Chart Explorer screen is the Shad Bala screen. Shad Bala is the six methods for calculating planetary strengths or weaknesses. Manglik Dosha graph is also listed on this screen. Everything that you see on the screen is printable.

### ECLIPSE MAP:

A solar eclipse occurs when the Moon is conjunct the Sun and the latitude of the Moon is the same as the Sun, so that instead of the Moon passing above or below the Sun, it passes directly in front of the Sun. When a solid object (the Moon in this case) is placed in front of a source of light (the Sun in this case) of course a shadow is created. During a solar eclipse, the shadow appears on the earth. The Moon travels faster than the Sun (from the earth's point of view) and as the Moon moves from one edge of the Sun to the other, causing the shadow to move across the surface of the earth. The shadow is fairly narrow, so a path can be drawn on a map showing where this path is. The eclipse maps in Kepler show the path of the shadow formed by the solar eclipse. You can select more than one eclipse occurrences on one page. On the sample above, there are 6 eclipses selected.

### SKY MAP:

A map of the sky for any chart can be displayed on the screen. You can view a circular representation of the sky that was above the horizon, and another circular representation of the sky below the horizon. These circular representations give a fairly accurate image of how the sky actually looked. Because the computer screen and a piece of paper are in 2 dimensions and the stars in the sky are placed like lights inside a sphere, any representation on the computer screen or on a piece of paper is not completely accurate, but viewing the sky in 2 circular halves gives a rough approximation.

You can also view the sky in a rectangular coordinate graph as well. View the planets from the perspective of the ecliptic plane or equatorial plane, as well as the horizon plane. The ecliptic, equatorial, and horizon planes are also drawn in these Sky Maps, giving you a picture of how planets and fixed star positions vary depending on the coordinate system you use. These Sky Maps give you a better idea of what the sky actually looked like at the time of someone's birth than a traditional astrological chart wheel does, and can give you a new perspective and appreciation of the appearance of the sky. The ability to easily choose a perspective based on the ecliptic, equator, or horizon and to choose either a circular or rectangular presentation makes the Sky Maps feature of Kepler very flexible and easy to use.

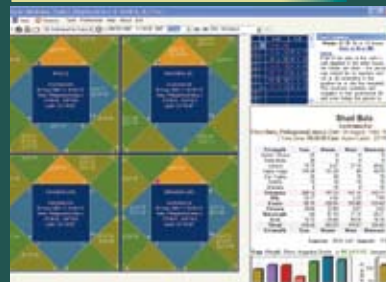
### GRAPHIC EPHEMERIS:

The graphic ephemeris is very powerful. Natal, transiting, secondary progressed, and/or solar arc positions can be combined together. Color coded lines help identify which charts are involved in an aspect. Customize by selecting planets, line thickness, and other options. There is an option to use Heliocentric or Geocentric. The use of Longitude, Declination, Latitude positions, and Right Ascension is another flexible feature of graphic ephemeris. Easily switch from Heliocentric or Geocentric Graphic Ephemeris, and easily switch from Longitude, Declination, Latitude positions, and Right Ascension.

### ASHTAKAVARGA:

Ashtakavarga is a system which is used to measure the strength of houses and planets which are in these houses. These can be transit-

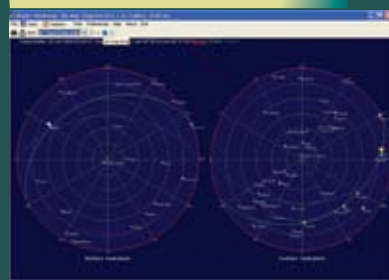
Kepler Workshop  
Screen



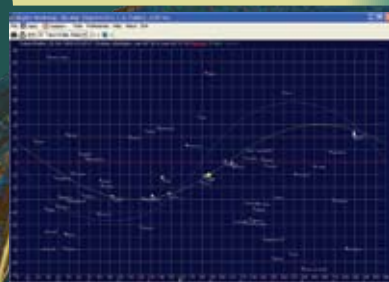
Eclipse Map



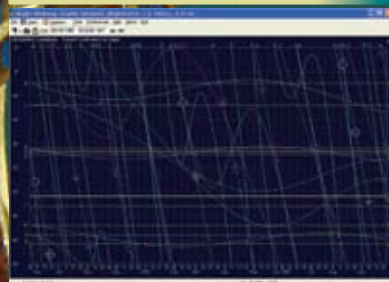
Circular Sky Map



Rectangular Sky Map



Graphic Ephemeris



### Ashtavarga Screen



### Moon Calendar



### Wheel Style AAA



### Wheel Style EAA



### Wheel Style BAC



ing planets or planets in the birth chart. Ashtakavarga literally means eight divisions which is referring to the 8 planets plus the Lagna. This technique is very useful in determining the effect of a transiting planet may have in a house. This is determined by how many points or bindus a planet may distribute to a sign/house. If the points are high for a sign, the transit of that planet gives good results, if it is low, it will give difficult results.

The Ashtakavarga screen is divided into 3 windows (shown left): a Sarvashtakavarga (bhinna & sarva) table window (located at the top right corner of the screen). Sarvashtakavarga is the sum total of the points or bindus from all the planets distributed to the signs/houses. The bhinna and sarva points are color coded. These colors reflect the low and high strength of each point. If the points are high for a sign (assigned color: green), the transit of that planet gives good results, if it is low (red), it will give difficult results. Average points are either blue or gray color. b) The prastarak tables window (located at the bottom right corner of the screen), contains a list of planets and points (or bindus) for each planet.

#### MOON CALENDAR:

It shows the date, current location of the moon on specific day, the illumination, the distance in km, and moon phases. You can set the calendar to any date from the range of 1900 to 2100 AD. You can select from 1 up to 12 months moon calendar. Moon phases and Moon Ingresses are also listed.

### KEPLER SAMPLE CHART WHEELS:

Kepler can produce many different kinds of chart wheels. The samples shown here are just a few of the many possibilities, and you can also customize chart wheels as well. Chart wheels are available in Portrait and Landscape format.

Kepler allows you to change the size of the chart wheel, the way in which cusps are drawn and planets are placed in the wheel, colors, and what tables appear, which planets and tables appear in the wheel, and how much information to put in the aspect grid, etc. Graphic pictures can also be placed in the background.

If you are a beginner in astrology, then these options may not interest you at this time, but if you are a professional astrologer, this flexibility and customizability will be important to you.

Every astrologer has his/her own unique way of doing things. Some astrologers want a chart wheel with the planets on the outside of the ring, or midpoint trees with 16th harmonic aspects, and some just want plain and simple information. Kepler is flexible and versatile enough for the technical astrologer who is fussy about how information is presented and simple enough for the novice, and also filled with instructional information to help you.

**Wheel Style AAA:** This small wheel size has room for a large aspect grid that gives detailed information: angular distance, aspects, orb and whether the aspect is applying or separating. You can customize many feature of any chart wheel style. Many users select the wheel style that is closest to their favorite wheel style and then customize the wheel to their liking.

**Wheel Style EAA:** This wheel style is a bit larger than wheel style AAA and also uses the True Node instead of the Mean Node. You have the option of selecting equal or unequally spaced houses. In this case we have chosen unequally space houses. Small medium and large grids can be selected. This particular style uses the medium size grid

**Wheel Style BAC:** This small wheel and small grid allows more details to fill in this page. You have the option to include explanation tables which is a helpful tool for beginning students, and your clients and customers. In the explanation tables you will find zodiac signs and planets symbols, etc. The color scheme shown here is "Rainbow Bright".

**Wheel Style IAC:** A big wheel is shown here. A small aspec grid fits in the lower left corner. We selected the Mean Node and equally spaced houses. Notice that the planets are drawn from the outside of the circle towards the inner circle. The Color Scheme is "Turquoise Blue". Kepler comes with many wheel variations so it is unlikely that you will need to customize your own.



**Four Separate Wheels:** You can place 2 wheels, 3 wheels, or 4 wheels on the screen display or printed page. Shown here is a sample of 4 wheels. You can easily select wheels for different people, or for the same person, and you can just as easily select progressed, returns, composite, or relocated charts just as easily as natal charts. You could also select some, or all, of the wheels to be heliocentric, harmonic charts, etc.

**TriWheel Style AGE:** A TriWheel has 3 rings, and each ring is a different chart. Just as with separate wheels, you can easily select any kind of chart for any people desired. The color scheme shown here is "Blueberry Plus". This color scheme, like "Rainbow Bright" has a background color, but it is more subtle than the rainbow effect in the Rainbow Bright color scheme. The aspect lines in the center are optional.

*QuadWheel Style AGE*



**QuadWheel Style AGE:** A QuadWheel is similar to a TriWheel, but has 4 rings instead of 3. On all of the chart wheels there is a place for your company name. Note that we do not put our company name "Cosmic Patterns" on any of your printouts, so the printouts can look exactly the way you want them to. The color scheme shown here is "Stunning Green".

**ArtWheel KBE:** The art wheel shown here is one of the 30 art wheels that come with the Kepler program. The background sky, water, and angel in pastel blues and pinks makes a beautiful background for this intricately patterned chart wheel.

**Huber Wheels:** Among the many chart wheel styles that Kepler produced are 3 Huber Wheel styles; Huber Wheel (regular), Huber House Wheel, and Huber Mondknoten. If you want to use all three huber wheel styles printed in one page, you can do so by selecting "Three Wheels" on one page. Any of the chart wheel styles can be printed or viewed in either portrait or landscape format.

A Huber Wheel is a chart wheel that conforms to the theories of astrology developed by Bruno and Louise Huber. The system of astrology that they developed is known as the Huber method or Huber system.

In addition to the overall aesthetic presentation of the wheel, an important feature of the Huber Wheel is the way that the aspect lines are drawn and the orbs of the aspects. If you select the Customize button on the screen that is displayed while selecting the Huber Wheel, and then select the Aspects tab, you will see that the "Huber Method" aspect set is selected. Viewing the settings for this aspect set shows the orbs and settings for aspect lines that are used in the Huber system.

*4 Separate Wheels*



*ArtWheel KBE*



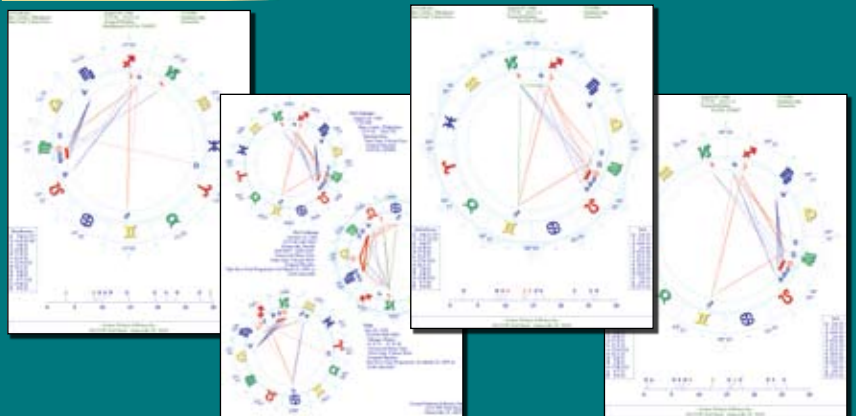
*TriWheel Style AGE*



*Wheel Style IAC*



*Huber Wheels*



### Medieval Wheel



**Medieval Wheel:** There are 2 kinds of Medieval Wheel that can be produced from Kepler. The Medieval wheels provide an Essential Dignities table, almuten and sect tables, conjunctions to fixed stars, and other information that is important in a classical interpretation of the chart. Aspects are based on the classical system of assigning orbs to the planets rather than to the aspects.

THE FOLLOWING CHART WHEEL PRINTOUT SAMPLES ARE SPECIAL AND UNIQUE CHART WHEELS THAT ARE NOT AVAILABLE IN ANY ASTROLOGICAL SOFTWARE. THE KEPLER PROGRAM IS THE ONLY PROGRAM THAT CAN PRODUCE THIS KIND OF WHEEL.

### Asteroid Wheel



**Asteroid Wheel:** An Asteroid Wheel is a 2-ring wheel with the planets in the inner ring and asteroids in the outer ring. Some, but not all, asteroids have been assigned a glyph by astrologers. For those asteroids that do not have a glyph assigned to them, a 3-letter abbreviation is used for the asteroid; the 3 letters typically are the first 3 letters of the name of the asteroid. If you prefer, you can also customize the Asteroid Wheel so that all asteroids are displayed with the 3-letter abbreviation.

### Midpoints Wheel



**Midpoints Wheel:** In addition to being able to produce Midpoint Tree printouts, Kepler can also produce Midpoint Wheels. The whole point of a midpoint tree is to be able to easily see midpoint structures in the chart. Now, it is even easier to see it using the Midpoint Wheel. What is a midpoint structure? A midpoint structure occurs when one planet makes an aspect to the midpoint of 2 other planets.

### Fixed Star Wheel



**Arabic Parts Wheel:** In ancient times the arabic parts were called "Lots", as in allotments (of fate). The ancient use of Lots was quite different from the modern use of arabic parts. The formula for an arabic part is the Ascendant plus one planet minus another planet. For example, the formula for the Part of Fortune is Ascendant+Moon-Sun. There are many dozens of arabic parts. In addition to producing Arabic Parts listing in Kepler, Arabic Parts Wheel can also be easily produced.

**Fixed Stars Wheels:** Most astrologers emphasize the influence of the Sun, Moon, and planets in their chart interpretations. Some astrologers also use the positions of stars in their interpretation. The stars are usually referred to as "fixed stars" by astrologers. When looking up at the night sky, the planets look like stars, except that they move through the constellations. The fixed stars do not appear to move significantly relative to each other, so consequently the constellations (such as Orion, the Big Dipper, etc.) do not change shape over time. Fixed stars were used in ancient times and each star has a specific influence. In addition to producing Fixed Stars listing from Kepler, you can also produce a Fixed Stars Wheel.

All of the above chart wheels can also be printed or viewed in portrait or landscape format.

### Arabic Parts Wheel



## REPORT OPTIONS

Cosmic Patterns has the world's best and largest collection of interpretive reports! These reports are written by some of the world's best professional astrologers. Each report was carefully and painstakingly developed by an expert, and is designed to provide the most accurate and useful information possible.

**A PRELIMINARY NOTE ABOUT OUR REPORT OPTIONS FOR KEPLER OR PEGASUS:** We have a lot of report options to choose from. All reports are well-written and represent the creative work of the author. The features of these reports and their prices are set by the author of the report so the best report is not necessarily the most expensive one. Any of the report options below are not stand alone program. It requires Kepler or Pegasus to run.

### GENERAL NATAL REPORTS:

If you are new to astrology, you may not know what a natal report is: it is an interpretation of the birth chart that does not focus on one specific or narrow issue such as vocation, but instead provides a comprehensive analysis of the person.

**MERLIN:** This interpretation of the birth chart is written by Gina Ronco and Agnes Nightingale. The interpretations are clearly written, with sensitivity, and are free of astrological jargon. The Merlin Report uses a sophisticated technique that leads the reader from one idea to the next so that the report is not as "choppy" and does not contain as many contradictions as most other computer-generated astrological interpretations. This report interprets planets through the houses, the Nodes, Asc., conjunction, opposition, trine, square, sextile, and quincunx. About 12 pages in length. *Languages available: English, French, Spanish, German, Portuguese, Russian, Norwegian, Hebrew*

**INDRA:** This interpretation of the birth chart by Bob Mulligan is very comprehensive and in-depth. Here is another example of the extremely thorough, specific analysis: for the interpretation of a planet conjunct the Ascendant, there is a different interpretations if the planet is on the 12th house or 1st house side of the Ascendant and also whether the planet is afflicted (has hard aspects) or not. The Indra Report is 30-35 pages in length. *Language available: English, Spanish, German, and Italian*

**ALPHA IMPRINTS:** This report by veteran astrologer Riley Goodwin is well-written and clear. Riley provides an explanation of the astrological basis to the interpretation. This report is excellent for people who like an explanation of the astrological basis for the interpretation. Riley's approach is inspirational and philosophical as well as practical and down-to-earth. This report can be produced in two different styles: Narrative (about 8 pages in length), and Academic (about 10-15 pages in length). *Currently available in English only.*

**LIFE PATH:** The Life Path Report offers a unique blending of the psychological, spiritual, and material plane potentials found in each individual horoscope. This report gives all planet in sign, planet in house and major aspects interpretations. North node interpretations by sign and house position, retrograde planets and elemental emphasis make this a well rounded report. Included is a special section devoted to house rulerships which add yet another level of understanding to the overall picture. About 10-13 pages in length. *Currently available in English only.*

**ELIE:** by Benedict Elie: This report provides a thorough and detailed analysis. Practical and useful advice is given regarding difficult astrological influences, so you can

avoid potential problems and difficulties. This straightforward, in depth, well-organized analysis includes a description of the planets in signs, houses (if the hour of birth is provided), and the aspects between planets. This report is detailed, insightful, and thorough. In this report, a section is provided to discuss the era of Pisces and the era of Aquarius in order to understand the influences of these sidereal eras on the day-to-day life of every human being. It is about 60 pages in length. *Currently, this report is only available in French.*

**COSMO NATAL:** This report is included in the Kepler program. It is a very short natal report that interprets the planets in zodiac signs and in aspect to each other. Although short, the report is very well-written; it is the same text that is used in the very popular Merlin Report, which is far more extensive and thorough than the Cosmo Natal Report. About 3-5 pages in length. *Currently available in English, Spanish, Portuguese, French, German, Norwegian, and Japanese.*

**MAJOR LIFE THEMES** by David Cochrane: This report is included in the Kepler program. Each interpretation is based on 3-planet pattern. It produces one page of printout. *Currently available in English, Spanish, and Norwegian.*

**LIVE MINI READING** by David Cochrane: This feature is included in the Kepler program. The Live Mini Reading is an audio visual presentation! A chart reading is spoken. While you listen to the chart interpretation, a picture is displayed. Background music accompanies the voice to make the experience very absorbing. *Currently available in English only.*

The Major Life Themes Report and the Live Mini Reading Multimedia Interpretation use advanced harmonics and midpoints theory. The Live Mini Reading is very entertaining not only for you, but also for friends and family. The Live Mini reading is an interpretation of the birth chart based on sophisticated ideas in harmonic astrology and cosmobiology. The interpretations are clear and straightforward. The interpretations are spoken while you view gorgeous graphics and listen to background music! Liven up your next party or get-together by letting your friends watch this multi-media presentation. Even skeptics are amazed when they see and hear this reading. Kepler is the only astrology software in the industry that has this option.

**ASTROLOCALITY REPORT** by David Cochrane: The AstroLocality Report uses astrological methods developed through the latter half of the 20th century, and refined through extensive research, some of which is described in the book "AstroLocality Magic". This report is included in the Kepler program.

**HARMONIC HIGHLIGHTS** by David Cochrane: The Harmonic Highlights Report is a short report, about one to two pages in length. This report interprets 5th, 7th, 9th, 16th, 24th, and 32nd harmonic aspects in your chart. Many astrologers are interested in experimenting with the minor aspects that are used in harmonic astrology, but there are few tools to help you get started with this branch of astrology. The Harmonic Highlights Report will give you insight directly into what harmonics reveals about your charts. Written by David Cochrane, a leading authority on harmonic astrology and one of our computer programmers. These interpretations are direct, straightforward, brief descriptions of what these aspects in the chart mean. This report is included in the Kepler program.

## **SPECIALIZED NATAL REPORTS:**

All of the reports described below focus on a particular issue or group of people. For example, the Child Report is written specifically for parents of children, the Vocational Guidance report focuses on career choices, and several reports analyze the birth chart from a metaphysical point of view.

**GALACTIC REPORT** by Philip Sedgwick: This report interprets the influence of a group of asteroids known as Centaurs and also Black Holes in the birth chart. Modern astronomers have discovered a great many celestial objects that the ancients did not know exist. Philip is bringing astrology up to date with modern astronomy through his extensive research and work with objects in the outer limits of our solar system and beyond. These objects reveal emotional and spiritual sides of the person that have been previously overlooked. The Galactic Report supercedes the Centaur Report, which is an earlier version of this same report. Owners of the Centaur Report can upgrade to the Galactic Report for \$75. *Currently available in English only.*

**CHILD REPORT** by Horacio Valsecia: This report is written specifically for parents of children, and it focuses on issues that parents are concerned about for their children: the needs, talents, potential problems, health, relationship to parents, the school environment, etc. The Child Report is accurate and well-written. About 12-14 pages in length. *Languages available: English, Spanish, Portuguese, French, German, and Norwegian.*

**FLOWER ESSENCE & GEM** by Gina Ronco: This beautifully written report analyzes patterns of imbalance found in the natal chart and offers very unique alternatives to traditional medicine. The report includes ill-health tendencies of the person and provides specific tools which can improve health of the entire being by offering suggestions for the emotional, mental, and spiritual body. Flower essences, gems, music, aroma therapy and color

therapy are among the healing tools that are mentioned in the report.

Gina Ronco, who in addition to being an astrologer is also a flower essence practitioner and Reiki healer. This report analyzes hard aspects (trines and sextiles are not interpreted) and zodiac sign positions of the inner planets. Obviously, this is a unique report, and very popular. About 8-10 pages in length. *Languages available: English, French, Portuguese.*

**MEDICINE WHEEL** by Dr. Randall Roffe, D.C.: A traditional Native American astrology program for natal charts; It is based on the Kvniakati Tsulawi Medicine Wheel tradition of the Southern Shawnee and Cherokee, with some references to the traditions of other North American tribes.

Dr. Roffe is a direct descendant of the Chickamaugan Tsulawi Cherokee, Chickasaw, and Southern Shawnee Kvniakati practitioners. He is not a member of an currently Federally recognized tribal entity. About 14-15 pages in length. *Currently available in English only.*

**HIDDEN MESSAGES** by Maxine Taylor: This report describes subconscious issues that can affect your attitude towards life, and in particular how your relationship with your parents can be affecting your personality. About 7 pages in length. *Currently available in English only.*

**REVELATION** by Maxine Taylor: This report gives very short, simple, direct interpretations of the astrological influences in your birth chart. Beginning students of astrology can find the concise interpretations helpful in developing their own ability to focus in on the essential meaning of the astrological influences. It emphasizes the importance of a positive attitude to make the most of one's life. About 10 -11 pages in length. *Currently available in English only.*

**ASTRO ANALYSIS** by Maxine Taylor: is an interpretation of the birth chart designed for beginning students of astrology. This report helps you apply basic astrological meanings of the planets, signs, and houses to a birth chart so that you can learn how to interpret the birth chart on your own. The author untangles the complexities of the astrology chart with a straightforward method of translating the symbols in a chart wheel into meaningful statements about the person. About 15 - 20 pages in length. *Currently available in English only.*

**NAUGHTY NATAL** by Art Poppe: This report makes a good gift or practical joke! It pokes fun at the person and keeps you laughing and often because they are accurate too. Art Poppe, author of this report, likes to poke fun especially at the sexual side of the person, and the language is rather raw and is designed strictly for adults. The printout is 5 pages in length. *Currently available in English only.*

**ADULT REPORT** by Horacio Valsecia: This report provides a comprehensive analysis of the birth chart, and includes suggestions on how to improve your life as well. The Adult Report analyzes issues of importance to adults, including marriage and sexuality. Four variations of the report can be produced: Men, Women, Gay Man, and Lesbian Woman, so that any issues regarding romance and sexuality take into account the sexual orientation of the person. *Languages available: English and Spanish.*

**VOCATIONAL GUIDANCE** by Horacio Valsecia: This report is a wonderful tool for those who wish to learn more about or are seeking their vocations or professions. Horacio determines strengths found in the individual's natal chart and guides the reader in finding his or her true vocation or profession while at the same time providing an analysis of personal characteristics, unused potential, ability to earn money, etc. Horacio has made numerous indications of possible vocations or professions in a clear and direct way. About 13 pages in length. *Languages available: English, Spanish, Portuguese, and Norwegian.*

**PERSONAL SECURITY REPORT** by Lorna Houston: Every one of us protects ourselves from danger, whether it be by having a security system for our homes, locking our cars, avoiding certain places, learning self-defense, or carrying a weapon. Unfortunately, we do not live a world where we can afford to be careless. How can we avoid sending out subtle signals that we are vulnerable in certain ways or arouse animosity from others. Needless to say, there are no guarantees but some added awareness may help you to better protect yourself and prevent yourself from being a victim. This report by Lorna Houston offers readers a chance to analyze the environment around them based on their birth information and promotes awareness of crime and possible solutions for avoiding it. This unique report is well written and is one of a kind. About 16 pages in length. *Currently available in English only.*

**NATURE APPRECIATION REPORT** by Lorna Houston: Most astrological reports focus on us as individuals, but each one of us is part of our communities, and the world. While we strive for success and happiness, what effect are we having on our natural environment? This report focuses on what you can do to be a better world citizen, and more specifically what you can do to nourish and protect our planet, and leave the earth a more beautiful place than when you entered it. Lorna Houston, an environmentalist and astrologer, created a very well written and enjoyable report to read. About 10 pages in length. *Currently available in English only.*

**WORLD PEACE REPORT** by Lorna Houston: This report is based on a positive vision of world peace, and the belief that each individual has the potential within to make a significant contribution to world peace. The basis of inner peace is self-esteem and self-knowledge, and when enough individuals are self-aware, they will act in accordance with natural laws to promote harmony around them, and the result will be world peace. About 10 pages in length. *Currently available in English only.*

**FIXED STAR REPORT** by Dr. Randall Roffe, D.C.: This report prints interpretations for conjunctions of planets (listed by house rulers), Ascendant, Midheaven, and other house cusps to over 60 major fixed stars and star clusters, all distant suns in their own systems. In ancient astrology, fixed stars were an important ingredient in astrological interpretation, but in modern times less attention has been given to them. This short report shows that this ancient technique can add accurate information to the astrological analysis of the birth chart. About 3-5 pages in length. *Currently available in English only.*

**SENIOR REPORT** by Robbi Dyer: Most astrological reports assume that the reader is an adult, and is concerned with issues of career, marriage, romance, family, and inner development. The Senior Report addresses the issues that people face in later years. Author Robbi Dyer has written interpretations for planet and house combinations and created a database of almost 2,000 interpretations so that the interpretations zero in on specific details of the person's life. Robbi describes how you can maximize your potential in your later years to live a fulfilling and meaningful life. About 10 pages in length. *Currently available in English only.*

## PAST LIFE REPORTS:

**KARMIC PAST LIFE** by Terri Rohde: The analysis focuses on the Moon's nodes and Saturn but includes interpretations of many other factors in the natal chart as well. The print-out is short, about 5 to 6 pages long. *Languages available: English, Spanish, French, Portuguese.*

**CAYCE PAST LIFE** by Ry Redd: This analysis of the birth chart is based on Ry Redd's study of the Edgar Cayce readings. The language of this report is in Cayce tradition: very esoteric and inspiring. About 9-10 pages in length. *Languages available: English, German, French, Portuguese*

**KARMIC INSIGHT** by Gina Ronco: This in-depth report gives the reader an esoteric point of view and a look into the soul's intentions and lessons to be learned in this lifetime based on reverberations from past lifetimes. It is written in hopes that the individual may clarify their lessons and goals and illuminate their struggles. The Karmic Insight report concentrates on the aspects of the Moon (unresolved past-life issues that have been re-stimulated), the Sun (weaknesses, fears) while also interpreting all other hard and soft aspects. This is a very accurate and well-written report and is unique. About 8 pages in length. *Languages available: English and Norwegian.*

## COMPATIBILITY REPORTS:

We have 7 compatibility reports to choose from. The Cosmo Compatibility is included with the Kepler program. These reports describe the issues that arise in the relationship between 2 people. The strong points and potential problem areas are described. The Compatibility Report by Gina Ronco can produce both a romantic and non-romantic version of the report. The other compatibility reports can produce only a romantic version of the report.

**COSMO COMPATIBILITY:** Only about 5-8 pages long, this report compares the Sun signs and Moon signs, and interprets major aspects between the 2 charts that involve an inner planet. Although short, this report focuses on some of the major issues in a relationship, and is the same high quality text that is in the complete Compatibility Report. The Cosmo Compatibility Report is included with the Kepler program.

**COMPATIBILITY** by Gina Ronco: This option produces a report that analyzes the relationship of 2 people. There is a separate text provided for romantic and non-romantic relationships. The Compatibility Report discovers the most significant issues of the relationship (similar to the way an astrologer does it) and emphasizes these issues by placing them at the beginning of the report in a separate chapter. Very readable and offers insights on how to handle problem areas and better appreciate each other. The Compatibility Report is usually 10 to 15 pages in length with an average length of about 12 pages. An especially nice feature of the Compatibility Report is that you can also produce a forecast for the relationship! This forecast is based on transits to the composite chart of the two people. *Languages available: English, Spanish, French, German, Norwegian, Russian.*

**PSYCHE & EROS Relationship Analysis** by Lenore Canter: What is it you want to know when you are checking out a romantic relationship? Basically two things. First, you want to understand the emotional needs, temperament, hang-ups and issues each person brings to the relationship - in other words, the relationship potential of each person. And then, of course, you want to understand how the emotional needs, temperament, hang-ups and issues of one person relate to those of another person in order to see how they would get along - in other words, the compatibility analysis.

The Psyche and Eros Relationship Analysis consists of 4 sections: the first two sections describe the relationship potential of each person, and sections 3 and 4 are the compatibility analysis, describing how the two people experience each other and the relationship from the perspective of each person. About 17 pages in length. *Available in English only.*

**COMPATIBILITY & CONFLICT MARRIAGE AND ROMANCE** by Dorothy Oja: Rather than interpret every interaction between two charts, this report interprets only particularly important aspects between the two charts and relationships between zodiac sign placements, Aspects to the ruler of the 7th house cusp, aspects to angles, aspects to inner planets, and important zodiac sign placements are interpreted. In this way, the major themes and issues of the relationship are revealed. About 10-12 pages in length. *Currently Available in English only.*

**COMPATIBILITY & CONFLICT BUSINESS & FRIENDS** by Dorothy Oja: This report is based on Dorothy Oja's extensive work in relationship counseling and analyzing the lives of the famous and infamous. The contacts described in this report are certainly not all the combinations possible between two individuals, but instead this report focuses on the core patterns of relationship analysis that Dorothy uses in determining areas of compatibility and potential conflict between individuals. These basic points of contact are analyzed to arrive at an interpretation of what is central and important in the relationship. This interpretive report is actually two different reports with the same format. You can run a report for friendships and a different report for business relationships. About 10-12 pages in length. *Currently Available in English only.*

**THE COMPOSITE REPORT** by Art Poppe: This report analyzes romantic relationships by analyzing the composite chart in detail. Composite charts are very popular among professional astrologers for a very simple reason: they work! In this report Art Poppe interprets the composite chart in detail: the rising sign and decanate, as well as signs on other cusps, house and sign placements, aspects, and midpoint structures are interpreted. About 10-12 pages in length. *Currently Available in English only*

**HEAVEN SENT:** This report by Maxine Taylor is divided into two sections. The first deals with planets in houses, that is, which of your natal houses are triggered by his/her planets and vice versa. The second section deals with planets in aspect, or how your planets relate to each other. This report is about 5-10, pages in length. *Currently Available in English only.*

## PET REPORTS:

**CANINE REPORT** by Linda Frano: This report is written for owners of dogs. Linda is an experienced astrologer and also very deeply involved in working with dogs. She understands the issues, concerns, and how important your pet dog is to you. Dog owners know that each dog has its own unique personality, and this report describes your dog's personality, and how you can provide an environment in which your dog can thrive and be happy. About 12 pages in length. *Currently Available in English only*

**FELINE REPORT** by Linda Frano: This report is written for cats owners. Independent of mind and spirit, cats have always displayed outright indignant behavior at any attempt to train them. Having a mind of their own and a highly changeable nature, cats are unlike any other animal you've owned. The favorites of many, they are misunderstood by all. Astrology helps us to understand some of the quirks these highly intelligent animals display. About 10 pages in length. *Currently Available in English only*

## CHINESE ASTROLOGY:

**THE NEW ASTROLOGY A Unique Blend of Western and Chinese Astrology**

by Susanne White: White's books on Chinese astrology are among the best selling for a good reason. Her descriptions of the blended effects of the Chinese sign and Western Sun Sign are colorful, engaging, and accurate. We have adapted the excellent interpretations in her books to work as a natal chart interpretation, and the result is an exciting integration of Chinese and Western astrology that adds a new dimension to astrology.





## FORECAST REPORTS:

A Forecast Report predicts future trends - what is likely to occur over the coming months, days, or even years. The Kepler and Pegasus program includes the "Cosmo Forecast Report". There are also many optional reports; these optional reports require Kepler to run. Each of the Forecast Reports is described below.

**COSMO FORECAST:** The Cosmo Forecast interprets aspects from transiting planets to natal planets, and is available in four languages: *English, Spanish, French, and Norwegian*. *The English version provides interpretations of transiting Sun through Pluto to the natal planets, while the Spanish, French, and Norwegian versions interpret only transits of Sun, Mercury, Venus, and Mars to the natal planets.*

**ADVANCED FORECAST:** This report is an expanded version of the Basic Forecast Report by Gina Ronco. Interpretations of the 4 major asteroids and Chiron (written by Maureen Hajar) and midpoints (written by Jeff Jawer) is included. It simply gives the additional capabilities of midpoint, Chiron, and asteroid interpretations. One other feature that is in the Advanced Forecast Report, but not the Basic Forecast Report, is the ability to produce a forecast report in "Daily Format"; in this format one interpretation is given per day based on the strongest aspects in effect on that day. One month approximate page length is about 25-30 pages. *Languages available in English, Spanish*

**BASIC FORECAST** by Gina Ronco: You can run either a transit-to-natal or progressed-to-natal report; you cannot combine transits and progressions in one report but you can run them as separate reports. Major aspects (conjunctions, oppositions, squares, trines, and sextiles) formed between the transiting and natal planets are interpreted, and also planets through the houses. Outer planet transits are treated in detail and inner planet transit interpretations are short and succinct. The approximate length for one month is about 13-20 pages. *Languages available: English, Spanish, French, Norwegian, Russian.*

**STARLIGHT SOLUTIONS FORECAST** by Gina Ronco is a forecast report that not only describes future trends but advises you on how to best handle the astrological influences. For the outer planet transits, which have a longer and more powerful influence, the positive and negative tendencies, and remedies and suggestions for best handling the astrological influences are given. This is an intelligent and sensitive report designed to provide you practical information on how to succeed and move forward in your life. The approximate length for one month is about 12 pages. *Language available: English*

**POPPE FORECAST:** This report by Art Poppe is well-written, specific and detailed, with suggestions on how to best deal with the astrological influences. This report allows you to select which aspects, transiting planets, and natal planets are desired so that you can produce reports with a varying degrees of detail. There are interpretations of the traditional aspects (conjunction, oppo-

sition, square, trine, and sextile). Art's report includes semisquare, sesquiquadrate, and quincunx aspects. Another unique feature of this report is that you can interpret transiting midpoint structures, either transiting planet to natal midpoint and/or transiting midpoint to natal planet. The approximate length for 15 days is about 15-20 pages. *Currently available in English only.*

**ASTROJOURNEY Forecast for Teens and Young Adults** by Kathie Garcia: This report is written specifically for people in the 14 to 24 year age range, and focuses on issues that are important to this age group. Teens and young adults too often are the neglected age group! This time period in any person's life is critically important, a time when a person struggles to establish his/her own identity and values, and moves forwards to adult responsibilities, decisions, and commitments. Approximate length for one month is about 10 pages. *Currently available in English only.*

**ASTROJOURNEY II** by Kathie Garcia is a forecast report specifically geared toward today's young adults, and to their parents, prior to the time of the first Saturn Return at age 29, when full astrological adulthood sets in unequivocally. So much growth and change occurs during these vital years in the search for self-realization, financial independence, the end of childhood, marriage and family, etc. Parents, too, pass through many changes as their children take flight. AstroJourney II keeps concerned parents in touch with cycles affecting their older children as parental control diminishes.

**DESTINY & DECISIONS** by Riley Goodwin: This report is down-to-earth and practical. He gives suggestions on how to best handle the astrological influences as well. Riley worked on this project for many years, and the care and attention that he put into this project is evident in the high quality of the final product. The approximate length for one month is about 10 pages. *Currently available in English only*

**MINI-MINDER:** Art Poppe has written a very nifty new Forecast Report. This report provides very brief interpretations of transits, including the option to include midpoint interpretations. Each interpretation is clear, concise, and focuses on tangible, concrete issues, avoiding detailed psychological analysis. Even though interpretations are very short, the length of a report is not short if you include midpoint interpretations because midpoint interpretations lengthen a forecast report significantly. The approximate length for one month is about 10-12 pages. *Currently available in English only.*

**PORTUGUESE FORECAST:** This report is similar to the Basic Forecast Report. It interprets transiting planets forming major aspects to natal planets. Planets through the houses are also interpreted. Outer planet transits are treated in detail and inner planet transit interpretations are short and succinct. The approximate length for one month is about 10 pages.

## SPECIALIZED FORECAST REPORTS:

**LOVE & ROMANCE FORECAST:** For people very concerned about love and romance, this report focuses just on these issues. This report outlines the aspects between the transiting planets and the following three natal planets: Moon, Venus, and Pluto. The approximate length for three months is about 12 pages. *Languages available: English, Spanish, Portuguese*

**KARMIC FORECAST:** This report by Rosa Maria Viniegra is available at the current time in Spanish and Portuguese only. This forecast report focuses only on issues of a karmic and more inner nature. The approximate length for three months is about 15 pages. *Languages available: Spanish, Portuguese*

**BUSINESS FORECAST:** This report gives future trends for people engaged in running a business or making business decisions. This report interprets transiting-to-natal aspects that strongly affect one's business pursuits. The approximate page length for three months is about 6 pages. *Languages available: English, Spanish, Portuguese*

## SOLAR RETURN REPORTS:

A return is the moment that a transiting planet returns to the position it occupied at birth. For example, suppose that a person's Sun position is 14 degrees 20 minutes of Cancer. At about the time of the person's birth day each year the Sun will return to precisely this position of 14 degrees 20 minutes of Cancer. A chart constructed for this exact moment when the Sun returns to 14 degrees 20 minutes of Cancer is the solar return chart. Similarly, the Moon will return to the position it had at birth approximately once a month. A chart constructed for this time is the lunar return chart.

**SOLAR RETURN REPORT** by Horacio Valsecia: The analysis of the solar return chart is very thorough, analyzing both the solar return chart and its relationship to the natal chart to determine trends for the coming year. This report is essentially divided into two parts. The first part analyzes the general external conditions of the year and the opportunities or problems that could occur in different areas. The second part analyzes the twelve astrological house, marking specially in what area of your life the various astral influences will be manifested, emphasizing your probably responses and inner changes. It is about 15 pages in length. *Languages available: English, Spanish, French, Portuguese, German.*

**PLANETS IN SOLAR RETURN** By Mary Shea: The information in this report is based on the author's experience interpreting hundreds of Solar Return charts for clients over a 20 year period. Included in your report is an interpretation of retrograde Mercury, Venus and Mars, hemispheric and quadrant emphasis, preponderances and lacks, and each planet in every Solar Return house. Through the report, Mary Fortier Shea concentrates on a complete description of possibilities. Her examples range from spiritual transitions, starting a new

business, love affairs, marriage, issues involving children and parents, health, education, writing and publishing books, relocation, income changes, career transitions, and much more. She covers both positive and negative possibilities for the different Solar Return placements and configurations she discusses. About 10-15 pages in length.

**MANY HAPPY RETURNS** by Art Poppe: This report is a very comprehensive analysis of the solar return chart. Interpretations are lengthy and detailed. The influences begin approximately on your birthday and last until the following birthday. About 17-19 pages in length.

## HEALTH REPORTS:

**Anyone purchasing these health reports needs to sign a Disclaimer that states that the purchaser is fully responsible for properly using any of the medical reports and that Cosmic Patterns has no legal liabilities that arise if the purchaser distributes printouts of any of these reports.**

**ASTROMED** by Dr. Randall Roffe, D.C.: This report provides an astrological analysis of the natal chart with therapeutic indications based on Chinese and Ayurvedic healing, traditional medicine, western herbalism, yoga therapy, applied kinesiology and meric chiropractic, nutritional medicine, and homeopathy. About 10 pages in length. *Currently available in English only.*

**COSMOBIOLOGY HEALTH REPORT** by Agnes Nightingale: This report is designed to serve as a guide for those interested in researching the predisposition to disease in an astrological chart. Meant to gain a fairly quick general overview, it gives only short descriptions of the predominant influences. About 9-11 pages in length. *Currently available in English only*

**MEDSCAN** by Eileen Nauman: MedScan interprets element balances, heavily aspected planets, and other astrological factors, and provides details about your health, including what vitamin and other deficiencies are likely. Homeopathic and nutritional recommendations are provided. This report is written by well-known medical astrologer Eileen Nauman. About 10 pages in length. *Languages available: English, Spanish, Portuguese, & Russian*

**MEDICAL FORECAST** by Eileen Nauman: Eileen has developed a transit forecast report that describes the influence of transiting planets on human health and well-being, thus providing indications of tendencies for changes in health. Homeopathic and nutritional recommendations are provided. *Currently available in English only*

## LUNAR RETURN REPORTS:

**LUNAR RETURN REPORT:** Horacio Valsecia has developed a helpful guide that is based on a monthly chart calculated for the time when the moon returns to the exact position it was at the time of birth. The Lunar Return happens every 28 days, or about 3 times a year. These interpretations provide insights into possible events in a descriptive and comprehensive way while giving suggestions on how to deal with the positive as well as negative planetary aspects. The objective of this report is to offer a practical guide to the situations that will arise in the coming months. One month is about 3 pages in length. *Languages available: English, Spanish and Potuguese.*

**THIRTEEN MOONS LUNAR RETURN:** This report is based on an astrological technique known as Lunar Returns. The analysis is very detailed, being about a dozen pages for each lunar return. The date when the influence begins appears below. The influences described will last for about one month.

**MONTHLY FITNESS & LIFESTYLE GUIDE** by Art Poppe: This report is Lunar Return Report, It is designed to help you face the biggest challenge to your health and diet, which is your emotional state. When your emotions are out of control, your body follows your lead. Second in command is Mercury, taking the lead from the emotions and reacting on the body in very profound ways. This report is a monthly look at dietary and exercise potential based on the sign on the Ascendant, with a secondary look at the Moon, house, aspects and all other planets.

This Report is not intended to be used for "quick" dietary loss or health maintenance. It is not meant to be an "overload" of information so that the reader is confused by what can be overwhelming information if not closely monitored as seen below (in the USE paragraph). **DISCLAIMER: \*\*No diet or exercise regime should be started without the advice of a doctor or physician.**

**PROGRESSED REPORT:** Transits, progressions, and solar returns are three of the most common astrological forecasting methods. A progressions is a kind of unfolding of the birth chart over time based on a cosmic ratio like a day to a year. Don't worry, you don't need to understand the theory of progressions to read this interpretation of your progressed chart!

**SECONDARY PROGRESSED REPORT:** This report interprets the signs, the aspects, and the house positions in the progressed chart. The zodiac sign placements in the progressed chart and natal chart are also compared to each other. This report takes a rigorous approach to interpreting the secondary progressed chart, and the high quality of the final product reflects the care and attention that went into creating it. Like Riley Goodwin's natal report analysis, this report is well-written and based on Riley's many years of astrological consulting with clients and his years of study and research in astrology. It is about 15 pages in length. *Currently available in English only.*

## HORARY REPORT:

Horary astrology analyzes the chart for the moment that a question is asked rather than analyzing a person's birth chart. Horary astrology was widely used throughout the Middle Ages and the rules used in horary astrology are rather complex and sophisticated. Some modern day astrologers also practice horary astrology as well.

**ASTROQUEST HORARY:** Dr. Randall Roffe, D.C. has designed a Horary Report to answer questions of any nature. Randall provides likely outcomes based on the planetary positions of the time and place of the question and combines this with natal chart aspects of the individual. Descriptions are given of the general situation, the questioner, the quesited object or person and much more. Astroquest Horary Program is written in a very detailed but comprehensive language. This report includes Astro Love Quest Report, and the ability to produce a shorter report geared specifically towards questions regarding issues of love and romance. It is about 10-12 pages in length. *Currently available in English only*

## RELOCATION REPORTS:

*Cities and Towns reports describe astrological influences of any locality. These reports can be referred to when planning vacations, visits, business traveling, or relocating. Both reports use aspects and 13 midpoint structures to the relocated Ascendant and Midheaven to derive the astrological interpretations.*

**ASTROLOCALITY REPORT** by David Cochrane: This report is an astrological analysis of what you are likely to experience in the cities and towns that you selected is given. The astrological influences that are strongest begin with three asterisks (\*\*\*) and appear at the beginning of the report. Next are the influences with one asterisk (\*), which are strong but not as important as the astrological influences that have three asterisks. The astrological influences with no asterisks are at the end of report and are weakest, but they are also significant in your life. The AstroLocality Report uses astrological methods developed through the latter half of the 20th century, and refined through extensive research, some of which is described in the book "AstroLocality Magic". This report is included in the Kepler program.

**CITIES & TOWNS** by Gina Ronco: Are you thinking about moving, and wondering how you will like the new location? Or perhaps you are deciding on a place to vacation. Select up to 20 cities or towns, and the Cities and Towns Report will provide a brief description (about 1/3 to 1/2 page per location) of what you can expect in this location. *Languages available: English, Spanish, German, French*

**RELOCATION INFORMATION** by Art Poppe: The Relocation Information Report provides an analysis of each town that is a little more detailed (about 1/2 page to 1 page per location) than the Cities and Towns Report. Astrologer Art Poppe, uses similar techniques as those used by Gina Ronco in the Cities and Towns.

## OTHER PRODUCTS AVAILABLE

### 38,000 Asteroids



### 38,000 ASTEROIDS:

This set of 4 CD's provides you the ability to view the positions of up to 38,000 asteroids. You can select any of these asteroids to view in the Asteroids Wheel. You can also view a listing of all of the asteroids or all of the named asteroids in zodiacal order or in alphabetical order. Your computer must have 2 1/2 gigabytes of free disk space to install these 4 CD's of asteroid ephemerides.

### Kepler Mega Atlas



### KEPLER MEGA ATLAS:

The Kepler Mega Atlas contains towns that are not in the Kepler atlas. The Mega Atlas does NOT replace the Kepler Atlas because it contains only towns that are not in the Kepler Atlas.

The Mega Atlas provides over 1 1/2 million additional places. Many of these places are very small towns and villages, and some of them are alternative names of towns, such as when a town has a change of name. Birth places of historical figures are sometimes given as towns which many no longer exist or have had a change of name and in some cases this previously existing town or town with a different name will appear in the Mega Atlas.

If you enter the birth place into Kepler and the town is not found in Kepler's Atlas, you can click on the Mega Atlas button to see if it is in the Kepler Mega Atlas. The Kepler Atlas contains over 180,000 towns and nearly every town that a person is born in is already in Kepler but for those unusual cases when the town is not contained in Kepler, the Mega Atlas is very helpful.

### Pastel Collection Artwheels



### ARTWHEEL PASTEL COLLECTION:

This art wheel collection includes a wide variety of themes and styles. Throughout the entire collection, the most consistent quality is the subtle and exquisite colors. The Pastel Collection of 138 art wheels adds a new dimension to your Kepler Superb Astrology Software, and will delight your clients and customers with an inspiring and uplifting work of art!

Kepler Art Wheels were created for Kepler lovers! The Kepler program comes with 30 Art Wheels for you to enjoy. Due to the tremendous request we received from Kepler Lovers, Kepler Art Wheel "The Pastel Collection" is born. This option gives you an additional 138 Art Wheels that can be selected from within the Kepler program.

### Pastel Collection Samples



### COSMIC PATTERNS BOOKSHOP:

We now offer books from a select group of publishers of high quality astrology books and books related to astrology. We specialize in books that are well-written, intelligent, informative, and provide new ideas and fresh insights. If you do not see the book that you are looking for in our list, let us know. We will be happy to find them for you. To view the list of books, visit our bookshop online at <http://www.astrosoftware.com/BookShop.htm> or request our Books Oder Form.

# PEGASUS:

**Pegasus is similar to the Kepler program**, but has fewer features. Pegasus is like a "mini Kepler" program. The price of Pegasus is \$100, and the price of Kepler is \$300. If you do not need all of the features of Kepler, then it makes sense to save \$200 and purchase Pegasus instead of Kepler.

Suppose that you decide to purchase Pegasus, and later you decide that you wish to purchase Kepler. Pegasus owners can upgrade to Kepler for \$225, instead of paying the full price of \$300. Most of the cost of your Pegasus program is deducted from the purchase of Kepler if you decide to upgrade to Kepler at any time after purchasing Pegasus.

**Accuracy and Time Range:** Planets can be calculated from the years 999 BC to 2300 AD, except the 4 major asteroids and 8 transneptunian planets which are calculated only from years 1722 to 2100. Accuracy of Sun and Moon is less than 1 second of arc, the other planets is 2 seconds of arc, and the accuracy for the asteroids, transneptunian planets, and Chiron is 1 minute of arc.

**Calculations:** Natal, Composite, Solar and Lunar Returns, Relocation Charts, and Progressed Charts. Transit-to-natal and progressed-to-natal listings. Chart Wheels: 10 Chart wheel styles to choose from. Chart wheels are not customizable.

**House Systems:** Campanus, Equal, Koch, Meridian, Morinus, Placidus, Porphyry, Regiomontanus, Topocentric, Zero Aries, Sun-on-Asc.

**Zodiac:** Tropical, Sidereal Adjustment to Positions: Draconic chart, tobev Secondary.

**Editor:** Customize existing report or create your own report from scratch. You can also translate an existing report to other languages.

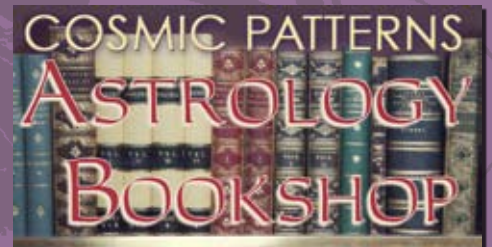
**Personalize the Printouts:** You can put your own name and address on the interpretive reports and chart wheels.

**Interpretive Reports:** Cosmo Natal, Cosmo Compatibility, Cosmo Forecast and Major Life Themes. You can also purchase optional report interpretations. Most of the optional interpretive reports that are available for Kepler are available for Pegasus as well! Suppose that you purchase several interpretive report options for Pegasus, and then later you upgrade to Kepler. Do you need to re-purchase the report options? No! All of your report options will work with Kepler, and if any of these reports have been improved, you will receive the latest version of these reports as well at no additional charge! (Note that this policy is true for Kepler owners as well. If you upgrade from an earlier version of Kepler to the latest version, you receive updated versions of any interpretive report options that have been improved at no additional charge).

**Atlas:** Cities in North America, South America, and Europe are included. Asia, Africa, and Australia include only a few major cities in each country. For people born in these continents, you must look up the daylight savings time and time zone information and coordinates.

**Features Not in Pegasus:** There are many features of Kepler that are not available in Pegasus. Some of the major features of Kepler that are not in Pegasus are: Kepler has a complete atlas of the world, the Live Mini Reading, Avalon College, AstroEncyclopedia, the collection of over 400 beautiful graphic images, ArtWheels, the data collection of thousands of charts of famous people and companies, AstroMaps, the ability to customize wheel styles, many astrological calculations such as midpoints, arabic parts, and harmonics, TriWheels, time line format of transits, heliocentric and altitude-azimuth charts, 1000 minor asteroid positions, transiting declinations and eclipses, Treasure Maps, and advanced research capabilities are not included in Pegasus, and many more!

Pegasus CD



Sample Book Covers



# AUTHORS AND CONTRIBUTORS TO KEPLER:

AUTHORS IN ALPHABETICAL ORDER:

**MICHAEL AND JEANNE BARUCH** live in Prescott, AZ where they own and operate Awakenings, Inc., an astrological chart and report service and a distributorship of metaphysical software. Interested in astrology since teenagers, their studies took an experiential slant when after meeting they found they were born just 12 hours apart. Michael and Jeanne are the author of the "Lunar Phases" report.



**LENORE CANTER** is the author of the **Psyche and Eros Relationship Analysis** for Kepler. Lenore is a native New Yorker and has been a practicing astrologer since 1969. She has Masters degree in Development Psychology from Columbia University's Teachers College and is a past president of the New York Chapter of NCGR.



**DAVID COCHRANE** is the author of the **Kepler program**. He also authored two books "Astrology for the 21st Century", and "AstroLocality Magic". David's extraordinary breadth of knowledge and experience in astrology, combined with his knowledge of psychology, astronomy, research methodology, statistics and celestial mechanics, his many years of work with clients, teaching experience, and strong spiritual and metaphysical orientation to life are a rare combination. He is an expert in harmonic and midpoint theory and has been called a "theoretical genius", "the world's greatest expert in harmonic astrology" and "the best speaker" at national conferences, and even simply "the best astrologer" by some of the world's most respected and experienced astrologers.



**ROBBI DYER** is the author of the **Senior Report**. Currently a student of Psychology, she first began her studies of Astrology and Metaphysics in 1969. While her preference is esoteric astrology and interpretation, Robbi also practices mundane astrology interpretation. She has also worked with the Sacred Tarot and the ancient Mystery School teachings. Robbi has been a published magazine writer for 17-years and also spent 7-years as a ghostwriter in the field.



**BENEDICT ELIE** is the author of the **French Elie Natal Report**. Benedict lives in Québec city. He works in accounting, information systems, business administration, security controls and project management. Benedict is very much interested in the study of spirituality, astrology, philosophy and theology. He has been practicing astrology, on a part-time basis, since 1970.



**LINDA FRANO** is the author of the **Canine Report**, and the **Feline Report**. Linda & her husband have been rescuing homeless animals for many years. An active contributor to the Humane Society, she currently cares for 10 cats and 2 dogs at her home in northwest Connecticut. Using a variety of sources, including books by Max Heindel, Jess Stearn, Edward Whitman, and Llewellyn George, she developed her own interpretive methods. Linda has been a professional astrologer since 1974.



**KATHIE GARCIA** is the author of the **AstroJourney Report**. She has been studying astrology for 32 years and is the owner of "The Three Magi Complete Astrological Services". Kathie holds a B.A. in anthropology from Tulane University. She is a certified Montessori teacher, with 8 years of experience in the classroom. Her AstroJourney Report is the first forecast report written specifically for teenagers and young adults.



**RILEY GOODWIN** is the author of **Alpha Imprints, Destiny & Decisions, and the Secondary Progressed Report**. He was a World War II veteran and a "jack-of-all-trades", He spent 10 years in Public Relations for private trade/technical schools, and nine years in the field of Chemical Dependency. Riley had a BS degree in vocational Rehabilitation from the University of Minnesota, with a minor in psychology, plus a Human Services Certificate (2 yrs). Riley became seriously interested in astrology in 1972, and began to add to his library. Riley passed away on July 2002

**MAUREEN HAJAR** wrote the **asteroid interpretations that are part of the Advanced Forecast Report**. She has been a dedicated student of astrology for over fifteen years. Much of her work focuses on the areas on chart comparison, major and minor asteroids, and forecasting. More recently, Maureen has lectured, provided workshops and astrological interpretations and consultations. Maureen is very active in assisting parents of children diagnosed with autism and is currently completing a personal story of her youngest son's full miraculous recovery from autism.

**LORNA HOUSTON** is the author of **Personal Security Report, Nature Appreciation Report and World Peace Report**. She was first introduced to astrology in 1973 and began practicing it in 1987. Lorna has a background in psychology. She co-authored scientific, empirical studies of astrology and crime patterns with Francois Gauquelin, who published these studies in France in her journal "Astro-Psychological Problems: The Schneider-Gauquelin Research Journal" and in the United States in the "Journal of the National Council for Geocosmic Research". Lorna has done crime prevention community work and offered astrological input to the police for homicide investigation.



**ANNE MOGUL** is the author of the **Life Path Report**. She has had an avid love of Astrology for many years. Anne enjoys sharing Astrology with others and she stays very busy traveling to festivals and various conventions introducing the benefits of Astrology to others. Additionally, she offers a simplified home study course available through mail order. "Many of the people I met expressed a desire for instruction which emphasized the how-to aspect of Astrology presented in an easy to comprehend format."



**BOB MULLIGAN** is the author of the **Indra Natal Report**. He is a well-known full-time astrological consultant who has traveled extensively, providing consultations and lectures to audiences throughout the United States and several other countries. In addition to writing the **Indra Natal Report**, he has also developed a home study astrology school.



**EILEEN NAUMAN** is the author of the **MedScan Natal Report**, and the **Medical Forecast Report**. She has been a medical astrologer since 1970 and has written **The American Book of Nutrition and Medical Astrology**. Eileen has a world-wide practice and is frequently called upon by the medical community on misdiagnosed or undiagnosable cases as a consultant. She is also utilized as a consultant by the Homeopathic community. Eileen has been an EMT-B since 1996, registered in the state of Arizona.



**AGNES NIGHTINGALE** is the author of the **CosmoBiology Report**. She began her study of astrology in the mid 1960's and became a Cosmobiologist in 1972. In the mid 1970's Agnes turned her hobby into a business, practicing astrology and conducting classes at her home. She attended Herkimer County Community College and later taught evening courses there, including astrology, cosmobiology and Conversational German.



**DOROTHY OJA** is the author of the **Compatibility & Conflict Romantic Relationship**, and **Compatibility and Conflict Business or Friends**. She is a career astrologer offering complete Astrological Consulting/Counseling, through her practice, **MINDWORKS**. Dorothy celebrates her 25 year anniversary in practice (30 years study) in 2006. Her specialties include: Timing/Electional work (dates for surgery, weddings, business openings etc.), Composite/Davison Relationship analysis, Children's Profiles and private tutoring.



**ART POPPE** is the author of **Naughty Natal**, **The Composite Report**, **Poppe Forecast**, **Many Happy Returns**, **Thirteen Moons Lunar Return**, **Relocation Information**, and **Monthly Fitness & Life Style Guide**. He is a dedicated

researcher and practitioner of astrology. Art is a full-time astrological consultant and writer. He has extensively researched political astrology and numerology, as well as many other areas of astrology.

**RY REDD** is the author of the **Cayce Past Life Report**. Ry was an astrologer from the late sixties until he passed away in February, 1994. He studied with Hindu Astrologer Dr. B.V. Raman and Henry Weingarten at the NASO School of Astrology in New York City. In the early seventies he began researching the massive astrological material in the Edgar Cayce readings.



**DR. RANDALL ROFFE, D.C** graduated with honors from **Palmer College of Chiropractic** in 1980. He has studied astrology with David Cochrane and Chandrashekar Thakkur. He is of Gaelic and Cherokee heritage and an expert in the herbal medicine, history and astrology of the Celtic and Native American people. He is the author of the **AstroMed Report**, **AstroQuest Horary Reports**, **Medicine Wheel Native American Astrology Report**, and **Fixed Stars Report**.



**GINA RONCO** is the author of **Merlin, Compatibility, Basic Forecast, the Advanced Forecast Report, Flower & Gem, Karmic Insight and Starlight Solutions Forecast**. She began her study of astrology and metaphysics in the early 1970's and has been a practicing astrologer since 1977. Originally a purist who was dubious about the value of computerized astrology (except for calculation), Gina is now enthusiastic about creating high-quality astrological reports.



**PHILIP SEDGWICK** is the author of "**The Galactic Report**". He began his study of astrology in 1969 while serving in the U.S. Navy. He has been consulting professionally since 1975, and established his career as a full time astrologer in 1981. Philip has lectured internationally and has conducted classes at several United Astrology Congresses and American Federation of Astrologers conventions. A researcher by nature, he investigated the astrological signatures of aviation disasters, intensively explored the effects of galactic phenomena on astrology and is an astrological authority on Comet Halley.



**DADHICHI TOTI** wrote the interpretations that appear in the upper right corner of the **Vedic chart wheel screen**, the **Chart Explorer window**, of the Kepler program. Dadhichi plans to further develop this Vedic report into a full report sold as a report option of the Kepler program. In the 20 years that Dadhichi has been practicing face reading, Vedic and Western astrology and other esoteric studies.



*Authors and Contributors to Keper continued*

**MARY FORTIER SHEA** is the author of the Planets in Solar Return Report and the book Planets in Solar Return. She has a Masters Degree in Counseling Psychology and does astrological counseling for clients across the country. Mary has over 20 years professional experience. Her readings are spiritual, as well as psychological and practical. She is an international speaker and a favorite lecturer at many conventions.



**MAXINE TAYLOR** the author of Revelation, AstroAnalysis, Hidden Messages, and Heaven Sent. In addition to these Kepler reports, she has published six astrology books. Maxine spearheaded the movement to legalize astrology in Atlanta and in 1969, became Georgia's first licensed astrologer. She was one of the founding members of the Atlanta Board of Astrology Examiners, a co-founder of the Metropolitan Atlanta Astrological Society and served as First Vice President of the American Federation of Astrologers. Maxine was CNN's on-air astrologer when CNN went live during the early 80's.



**HORACIO VALSECIA** is the author of the Child Report, the Adult Report, Vocational Guidance, Solar Return and Lunar Return. Horacio was an astrologer from the age of 21 and he also dedicated himself to teaching and transmitting his knowledge about the subject. He has written Egyptian Tarot Course, Spanish Tarot Card Course, etc. and he published his first book in Argentina called "New Age Love". Horacio passed away on February 14, 2000.



**ROSA MARIA VINIEGRA** is the author of the Karmic Forecast Report, Business Forecast, and the Love and Romance Forecast. She is a practicing astrologer in Spain, and also works in Mexico as well. From her many years of experience as a professional astrologer Rosa Maria has developed sensitive and perceptive insights into how astrological influences affect a person's life.



**SUZANNE WHITE** is the author of the "The New Astrology Report, A Unique Blend of Western and Chinese Astrology". Suzanne attended The Buffalo Seminary, an all girls' prep school and the State University at Buffalo. There, she obtained a degree in Education. Her graduate work was done in the teaching of French at Tufts University in Boston, Mass. Suzanne now lives in Paris, France. Her work experience is extensive and varied. In 1971, she began writing articles for women's magazines and by 1973 had written her first book, a novel called Ladyfingers that was published in both hard and soft cover in NY in 1974/75.



**ERMELINDA ADABBO** is Cosmic Patterns Italian professional translator. She translated the Indra report, and some of the Cosmo Reports in Italian. She is currently translating other report options into Italian. Ermelinda is a kabbalist and a master of Christian esotericism. She attended a Masonic Academy in Milan under the direction of Master Renzo



Calegaro, a world prominent spiritual figure who elected her as his continuator in Italy. Ermelinda have a passion for collecting prayers from the era before Vatican Council II. She now has a collection of them dating back from 1700 (in French and Latin), as well as a very rich collection that was handed down from her maternal grandmother.

**ANA MARIA ALLGAYER** translated many of the interpretive report options that were originally written in English or Spanish to Portuguese. We are very grateful to her for making it possible for us to offer many reports in Portuguese. (By the way, we don't want to slight or overlook our other translators; some of the Portuguese translations are from two other translators, and we are indebted to all of our translators for the huge amount of work they have done in translating these reports). Ana Maria has been studying astrology, various religions and vibrational therapies for more than three decades. As a child, she already was able to live and understand intuitively the Rosicrucian axiom that all is vibration. In the past few years, she has been furthering her knowledge in the field, with participation in various courses, constant reading, studies and personal experiences.



**LOUISE BLAIS** is the French translator of Cosmic Patterns Software. She has been interested in metaphysics as long as she can remember. She was 12 years old when she started studying astrology, in order to better understand the world and herself. Her search for meaning has lead her to the study of many religions, philosophies, quantum physics, and various forms of energetic therapies. She finally decided, in 1989, to go public about astrology and opened her practice, working full time as a professional astrologer. In her opinion, astrology is a wonderful system to study the archetypes of the collective consciousness and the cycles of time. Her main focus now is on the mechanics of conscious creation, and how we can work with all the influences (karmic, astrological, genetic, etc.) to design the reality we want in our lives. She is offering workshops regularly on this subject.



**PAUL GUESS** (Sudi) is Cosmic Patterns' graphic artist. He comes from a background in publishing and graphics. His web based company Endlessdesign.com focuses on digital design and Internet development. His ongoing interest in symbolism and universal systems helped him tune into the needs of Cosmic Patterns in order to create package designs and web graphics. Paul has published several art works on Kabbalah, Astrology and I-Ching.





**MARTHA JONES** Martha began her astrological studies in 1976. She has completed courses from Chris McRae (PMAFA), as well as correspondence courses from Ivy Goldstein-Jacobson and Bobbye Bratcher-Nelson. She is currently working through Gilbert Navarro's Horary Astrology course and Robert Zoller's Medieval Astrology course. Martha is a member of P.A.I, NCGR, and Astrology Calgary, her local association, for whom she edits "The Ninth House" newsletter. Since developing Astrovisuals in 1993, she has built up a significant repertoire of astrological images. Her articles have appeared in The Mountain Astrologer, and she has lectured publicly on the subject of Astrovisuals.

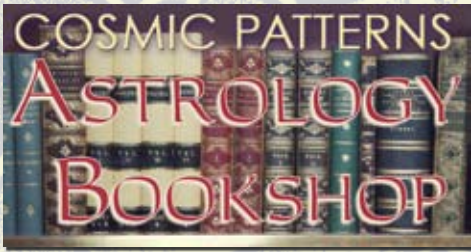
**NORA MERCEDES DE BEUS** was born in Buenos Aires, Argentina. For the past 23 years she has been studying and investigating Astrology in several countries. Some of her recent studies and work have been at the following institutions: CABA and Casa 11 in Buenos Aires, University of Salvador Buenos Aires and the Colegio Anchieta in Sao Paulo, Brazil (parapsychology studies), the Psychological Jungian Foundation and Psychological Lacanian courses in Rivadavia Hospital in Buenos Aires. She published her first book in Spanish "Metodología Astroanalítica en la consulta Astrológica" in 1997. Nora participated in many public lectures, meetings and events, and radio and TV appearances. She discovered Cosmic Patterns Software at an ISAR Conference in Los Angeles, CA in October 2000 and immediately began to use Kepler software. Since then she has been translating report options and features of Kepler into Spanish. Nora is honored to be a distributor of Cosmic Patterns Software in Argentina.

**MICHAEL MUNKASEY** has a BS in Mechanical Engineering from the United States Coast Guard Academy and an M.E.Ad. (Engineering Administration) from George Washington University. He is also a Vietnam war veteran. After spending many years in the service, he worked as a Computer Information Scientist in the general scientific and medical communities and for the public transportation (bus and subway) industry. Michael has been actively studying and practicing astrology since 1969. He holds Professional Astrologer's certifications from the American Federation of Astrologers (PMAFA), The Astrologer's Guild and has passed the Level III certification from NCGR (NCGR-III). Michael has contributed a large portion of information in Kepler that you will find in the AstroEncyclopedia. His compilation of data on ancient astrology, Vedic astrology, progressed techniques and many other areas of astrology has benefit the Kepler program tremendously.

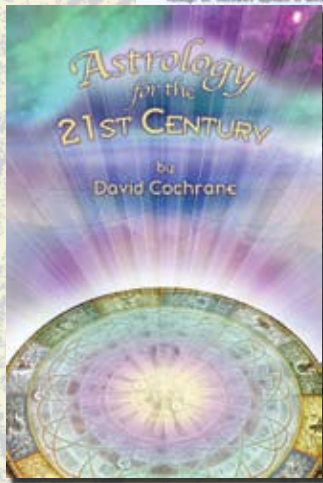
**MARK POTTENGER** has been involved in technical astrology and computer programming for many years. He has helped David Cochrane, the author of the Kepler program, several times with technical questions. He received a B.A. degree in philosophy in 1976. He taught math and astronomy at Intensives in Los Angeles, Helena, and Zaca Lake from 1976 to 1980. He has been programming since 1977. He is not a practicing astrologer. Mark was research director for ISAR (International Society for Astrological Research) from 1985 to 1995. Over the years Mark has been involved in numerous research projects, software development projects, and publication of technical data, ephemerides, etc. He is one of the few people that has both a thorough understanding of astrological theory as well as expertise in celestial mechanics, research, computer programming, and other technical areas.

**JOELLE STEELE** The Kepler program includes the data for over 2,000 earthquakes. The earthquake data was meticulously researched and compiled by Joelle Steele. He is an Astrologer, Artist, Graphologist, and Horticulturist, born on April 19, 1951 at 9:11 am in San Francisco, CA. Joelle is also a Writer, Editor, and Researcher with a degree in Language Arts. She writes about New Age topics such as astrology and graphology, as well as plants, cats and other domestic animals, small business management, music and lyric writing, and writing to get published. She has edited over 100 books, has authored eleven, and her more than 600 magazine columns and feature articles, have appeared in many specialty publications since her first article was published in 1974. She began studying earthquakes and compiling her Seismic Data Collection in 1973.





**Astrology For The 21st Century** is an exciting journey through many astrological traditions that culminates in a new synthesis. David Cochrane presents an integrated and comprehensive approach to astrological interpretation that incorporates a wide spectrum of different ideas into a new paradigm for astrology. Although Mr. Cochrane's approach to astrology is profound, erudite, and sophisticated, he also provides a clear and simple method for interpreting the birth chart. Follow one man's path of skepticism and amazement as he discovers that astrology does work, followed by the exhaustive and monumental effort that leads to revolutionary new astrological theories, the development of analytical software tools to research and apply these exciting new ideas, and the research that supports these theories.



**Astrology for the 21st Century** is an exciting journey through many astrological traditions that culminates in a new synthesis. David Cochrane presents an integrated and comprehensive approach to astrological interpretation that incorporates a wide spectrum of different ideas into a new paradigm for astrology. Although Mr. Cochrane's approach to astrology is profound, erudite, and sophisticated, he also provides a clear and simple method for interpreting the birth chart. Follow one man's path of skepticism and amazement as he discovers that astrology does work, followed by the exhaustive and monumental effort that leads to revolutionary new astrological theories, the development of analytical software tools to research and apply these exciting new ideas, and the research that supports these theories.

**Whether you are new to astrology or a professional, you will discover new vistas in astrology in this book.** This is the startling, exciting, and extraordinary story of the discovery, implementation, and validation of astrological theory. Whether you are a skeptic or a believer in astrology, this book will challenge your assumptions, and provide a new appreciation of the magic and mystery, of astrology. You will experience a refreshing new system for interpreting the birth chart that can complement whatever methods you currently use. This astrological system is built upon many remarkably accurate concepts scattered across a wide number of different astrological traditions as well as in physics, mathematics, and modern psychology.

**AstroLocality Magic** presents a new synthesis of several relocation methods into a new system. With unusual clarity and simplicity, the author explains the theoretical foundations for this new system. The concept is so new that anyone with an interest in astrology, from beginner to practicing professional, will find this book to be enlightening. The material is presented as a personal story that is so intriguing and captivating that you are likely to find yourself fully engrossed from cover to cover.

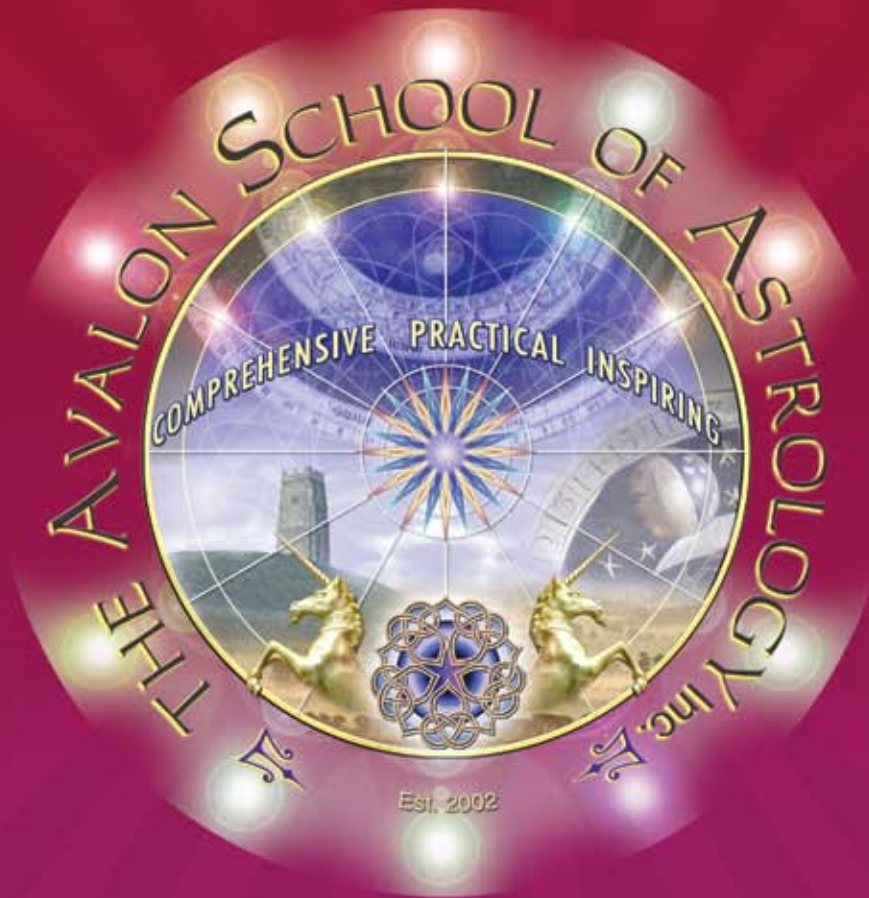
**The formula presented is remarkably simple, and yet it has eluded astrologers until now.** The analysis is essentially a marriage of the AstroMap, a product of western 20th century astrology, with the 9th harmonic chart, also known as the navamsa chart in ancient Vedic astrology. Although the methods may at first sound arbitrary (why 9th harmonic rather than other harmonics) the author presents a thorough explanation of why these particular methods are important.

**Author's comments:** AstroLocality Magic was written for anyone, from beginner to professional astrologer. This book is neither highly intellectual nor is it "pop astrology". AstroLocality Magic is almost unique in that it includes supporting research. This research is not dry statistics, but rather a fascinating account of how the theories work in a consistent manner even with random groups of people. AstroLocality Magic presents a great amount of fascinating material, illustrated with maps to make the concepts tangible and understandable. AstroLocality Magic is a breakthrough: cutting edge research findings are presented in an entertaining and simple manner, and the reader is shown a whole new side of astrology which until now has been unavailable in the astrological literature.

**About the Author:**

**David Cochrane** received his B.A. degree in 1972 with a major in psychology, and began his professional astrological practice in 1973. In 1980 he ended his consultation practice, and began devoting his efforts to developing astrological software. He now works with a team of programmers at Cosmic Patterns Software developing the Kepler program. David has also served as a board member and President of the International Society for Astrological research, and he is a well know speaker at major astrological conferences.

To view the full list of books, visit our bookshop online at: [www.astrosoftware.com/BookShop.htm](http://www.astrosoftware.com/BookShop.htm) or request our Books Oder Form.



## THE AVALON SCHOOL OF ASTROLOGY

The Avalon School of Astrology provides comprehensive training that prepares students for a career in the field of astrology. Classroom schedule is consist of 4 semesters of study and 900 hours of classroom study. The Avalon School of Astrology is located in Gainesville, Florida.

Graduates of The Avalon School of Astrology receive a diploma in Theoretical and Applied Cosmic Cybernetics approved by the State of Florida.

- **ARE YOU LOOKING FOR A DIFFERENT TYPE OF CAREER?**
- **DO YOU ENJOY HELPING PEOPLE AND LEARNING NEW SKILLS?**
- **DO YOU WANT TO LEARN HOW TO ADVISE PEOPLE THROUGH THE INCREDIBLE ART AND SCIENCE OF ASTROLOGY?**

**THEN COME TO AVALON!** The Avalon School of Astrology is the only physical astrology school licensed by a state in the entire United States. Our graduates receive a diploma in Theoretical and Applied Cosmic Cybernetics, and the training you receive will enable you to be an astrological counselor. If you already have a degree in psychology or are employed in a helping profession, learning the language of astrology can can expand and improve your practice.

Classes at Avalon are fun and exciting! Classes are enjoyable as well as educational and you will feel inspired to learn more. You will be proud to be a graduate of The Avalon School of Astrology, so come and join us!

- The first 3 levels of NCGR Certification are **WAIVED** for graduates of Avalon! After graduating from Avalon, you can apply directly for the very prestigious NCGR Level IV Certification!

**Address: The Avalon School of Astrology**

**6212 N.W.43rd Street, Suite A**

**Gainesville, FL 326 53, USA**

**Phone: 352-375-1250 OR 1-866-271-4425**

**[www.AvalonAstrology.com](http://www.AvalonAstrology.com) - e-mail address: [Avalon@AvalonAstrology.com](mailto:Avalon@AvalonAstrology.com)**

The World's First Astrology Software that provides Comprehensive Research and Electional Astrology, Complete Western and Vedic Astrology, and the Most Advanced AstroMaps all in One Program!

★ Beautiful and Easy To Use!



## ★ FEATURES

- ◆ AstroMaps: Local Space, Geodetic, Zodiac Sign, Treasure Maps, and Eclipse Maps
- ◆ Rectification
- ◆ Vedic
- ◆ 28 Coordinate Systems
- ◆ Electional Forecast
- ◆ AstroSignature Research
- ◆ Print Reports with Graphics included
- ◆ Avalon Lessons and AstroEncyclopedia
- ◆ Degree Meanings
- ◆ World's most complete atlas
- ◆ Graphic Ephemeris, Planet Text Ephemeris, and Asteroids Text Ephemeris
- ◆ 10 different interpretative reports included
- ◆ Time Line Forecast
- ◆ Live Mini Reading
- ◆ Huber Wheels, Medieval Wheels, Asteroid Wheels, Arabic Parts Wheels, Harmonic Wheels, Square Wheels, Midpoints Wheel and Blank Wheels
- ◆ Animated TriWheel
- ◆ Sky Map and Star Catalogue
- ◆ 4 styles of Astrology True Type Fonts
- ◆ Over thirty stunning Art Wheels included

## OTHER FEATURES INCLUDE

- ◆ BiWheel, TriWheel, QuadWheel, Up to 4 chart wheels on one page
- ◆ 16 House Systems
- ◆ Arabic Parts
- ◆ 8,000 Fixed Stars
- ◆ Relocated Charts
- ◆ Minor and Major Asteroids, Chiron, Vertex, Equatorial Asc., Transneptunian Planets, etc.
- ◆ Relocated Charts and Relocated Aspect Listings
- ◆ Planet Stations and Ingresses Listings
- ◆ Ingress, Eclipse, and Lunation Charts
- ◆ AstroClock
- ◆ Progressions and Directions
- ◆ Composite Charts (Asc. Midpoint, MC Midpoint, derived, time-space)
- ◆ Secondary, Tertiary, Minor, Solar Arc, and Degree for a Year charts
- ◆ direct converse + Solar, Lunar, and Planet Returns
- ◆ Transits and Progressed Listings
- ◆ Profile Scores
- ◆ Midpoint Structures
- ◆ Harmonics
- ◆ 90 degree dial
- ◆ Time Line Profile
- ◆ Draconic, Dwadasamsa, Declination Longitude Equivalent, Mundoscope, Antiscia, and Tobey Secondary
- ◆ Heliocentric, Horizon, and Right Ascension Wheels
- ◆ Transits
- ◆ Midpoint Trees in longitude or declination, graphic ephemeris of color coded natal, progressed and transiting planets in longitude or declination
- ◆ Dasas and Bhuktis, Shad Bala, Nakshatras, Vargas, and Gochara, Manglik, Ashtakavarga
- ◆ Numerology
- ◆ Moon Calendar
- ◆ 19,000 charts of famous people, earthquake, and businesses
- ◆ 4 True Type astrology fonts
- ◆ 1000 Minor Asteroid Positions, including recently discovered Sedna, Ixion, Varuna, and Quaoar
- ◆ Optional 38,000 Asteroids CD
- ◆ Optional Mega Atlas
- ◆ Optional ArtWheel CD AND MUCH, MUCH, MORE!

## REPORT OPTIONS THAT YOU CAN ADD TO KEPLER & PEGASUS

In addition to the 10 excellent interpretive reports included in Kepler, there are many dozens of optional interpretive reports to choose from. The following Optional Reports are available: 5 Natal, 17 Specialized Natal, 2 Past Life, 6 Compatibility, 2 Pets, 8 Forecast, 3 Specialized Forecast, 3 Solar Return, 2 Lunar Return, 1 Progressed, 1 Horary, 2 Relocation, and 4 Health Reports.

Many reports are available in Spanish, French, German, Portuguese, Norwegian, and Russian.

## EASE OF USE and CUSTOMER SUPPORT

The Kepler program is very easy to use and most of the features are fully customizable.

You can also create your own interpretive report or create your own chart wheel style.

We have the industry's best customer support by e-mail or telephone! If you cannot call us during our office hours, we can set an appointment for you to call us off hours on weekdays!

★ *"I can now say that Kepler truly offers something for everyone. From its unparalleled learning tools, to its beautiful chart wheels, to its graphic time lines and treasure maps showing when and where many themes are strongest, to its incredibly powerful astromapping and research capabilities, to its stunning array of the fine interpretive report - Kepler is a brightly shining star in the firmament of astrology software".*

April/May 2004 TMA Reviewer: Hank Friedman

England Office  
South Bank, Rattery,  
S. Brent, Devon, TQ 10 9LF  
phone: 01364 644443

**COSMIC PATTERNS**

Head Office  
6212 N.W. 43rd Street, Suite B  
Gainesville, FL 32653 USA  
phone: 352 - 373 -1504 (fax: 352 374 8826)

E - mail: kepler@KeplerSoftware.co.uk

E - mail: kepler@AstroSoftware.com

[www.AstroSoftware.com](http://www.AstroSoftware.com)

